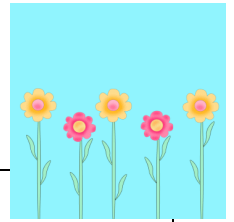


# 1L's Weekly News - Week of April 7<sup>th</sup>



## Dates to Remember:

- \* There will be no school next week (April 14<sup>th</sup> - April 18<sup>th</sup>) as it is April vacation. Enjoy your break! 😊
- \* 1L would like to invite all of our mothers to a very special Mother's Day Tea, on Friday, May 9<sup>th</sup> from 2:30-3:15.

## Reader's Workshop:

We'll spend this week reading with new reading partners. We'll practice retelling stories and talking about books together!

## Writer's Workshop:

In Writer's Workshop we'll wrap up our poetry unit of study. Last week we learned about similes. Ask your poet to share some of his/her similes with you! This week we'll talk about repeating words and punctuation in poems. We'll also spend time in the LMC typing some of the poems we've written!

## Math:

We'll continue our measurement unit in math. We'll practice making **reasonable estimates** and then measure objects using non-standard units. We'll focus on the word **length**.

- \* You can learn more about this unit by visiting the district's math wiki. Follow this link and click on the unit 5 letter:

<http://fairfieldpublicschools.k5math.wikispaces.com/Grade+1+Parent+Unit+Letters>

## Word Work:

- \* Our new Word Wall Words are: **over, then, were, when, would**.
- \* Be sure to check out Spelling City for our April Challenge list; it focuses on "going green"!

## Science/Social Studies:

In Science we'll begin our unit all about the environment. We will read many different books, and learn all about the words *reduce, reuse, and recycle*. Ask your scientist about a way to "go green"!

## Odds and Ends:

- \* Miss Mancini and I enjoyed meeting with all of you at conferences. It was great to share the growth that your children have made and the goals we are continuing to focus on.
- \* If you need anything after April break, Miss Mancini can be reached at: [kmancini@fairfieldschools.org](mailto:kmancini@fairfieldschools.org).
- \* In your first grader's homework folder you will find a bright pink paper from the Connecticut Audubon Society. We will be taking a field trip to the Audubon in June and they require this form back before we visit. Please return it to school as soon as possible. Thanks!