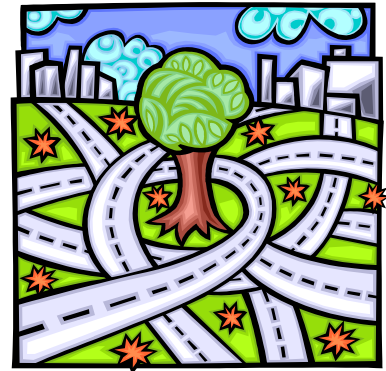


FLHS Traffic Patterns for PARENTS

Dropping off or Picking up Students

The police department and town engineering department helped determine the following procedures for our site to relieve congestion and improve safety. **Patience is still necessary!** If you have suggestions for improvements, do not hesitate to let an administrator or Alison Jones Allen, PTA President, know.



DROP-OFF/PICK-UP AT ARRIVAL (7:15-7:30 a.m.) AND DISMISSAL (2:00-2:20 p.m.):

#1. PRIMARY DROP-OFF AND PICK-UP is located at the back of the school. Entry is at the intersection of Unquowa and Barlow Roads at the four-way stop, then continue straight back around the gym area and turn right at the turf field. Drop students off near the large clock across from the tennis courts. Exit the FLHS campus using either (a) the access road to Mill Plain, or (b) the middle school bus loop around the turf field which brings you back to Unquowa Road. Please note: FLHS drivers **may not** use the RLMS bus loop between 7:45 and 8:15 in the morning and 2:40 and 3:15 in the afternoon.

#2. WEBSTER DRIVEWAY DROP-OFF AND PICK-UP: Entry is only from Unquowa Road (first right on school grounds coming from Mill Plain Rd). To drop off, pull over to the **left** at the gate area, drop your student off, and check for traffic passing on the right before continuing out. **Continue straight to** drive all the way to the far end of the student lot to exit. You may exit **either** (a) to the right to Mill Plain, or (b) to the left in order to access the middle school bus loop which brings you back to Unquowa Road. Please note: FLHS drivers **may not** use the RLMS bus loop between 7:45 and 8:15 in the morning and 2:40 and 3:15 in the afternoon.

NEW--During arrival/dismissal time, the front bus loop and the lower front staff parking lot should NOT be used as drop-off or pick-up locations. A \$465 fine could be administered by police to any vehicle that passes a stationary bus with its stop sign extended. Since it is important that our staff have full access to the parking spaces and we also have students who ride their bikes through this lot to access the bike rack in this area, the added traffic from student drop-off/pick-up creates a safety concern. Please use the two options listed above instead.

Parents/Guardians and students need to observe all traffic signs, especially the NO PARKING signs on Unquowa Road, Winton Road, and Brookbend Road. Police will issue tickets for illegal parking.

DROP-OFF/PICK-UP DURING SCHOOL HOURS (applies 7:35-2:00): Students leaving *during* the school day (medical appointment, illness, etc.) should be picked up by the flag pole on the front circular driveway.

General Notes:

- The entrance into the student lot from the access road by the tennis courts is for **students only**.
- The **front circular driveway may** be used during the posted times (7:45 a.m. and 1:45 p.m.). Do **not** use it otherwise as there is no room for cars when buses are loading and unloading.
- The **designated student parking lot** (behind the FLHS building) is designed to make it safer for our high school drivers and to make an orderly way for parents to drop off students for school. **Please keep in mind while using this lot that our young drivers are inexperienced and that pedestrians in the lot always have the right of way. Please always exercise caution.**
- **Please keep with the flow of traffic.**
- **Students should only get out on the sidewalk side of your car.**
- **At the back of the school, never pass unloading cars on the left.** There have been many near misses when cars pull out not expecting a car on the left.
- **You may use the middle school bus loop EXCEPT 7:45 to 8:15 in the morning and 2:40 to 3:15 in the afternoon. FYI, there are substantial penalties for passing a school bus with its red lights on and the stop sign extended.**
- **When riding buses, your children must ride their assigned bus.**
- **Do not use cell phones while driving, and do not exceed 20 mph on campus.**

