

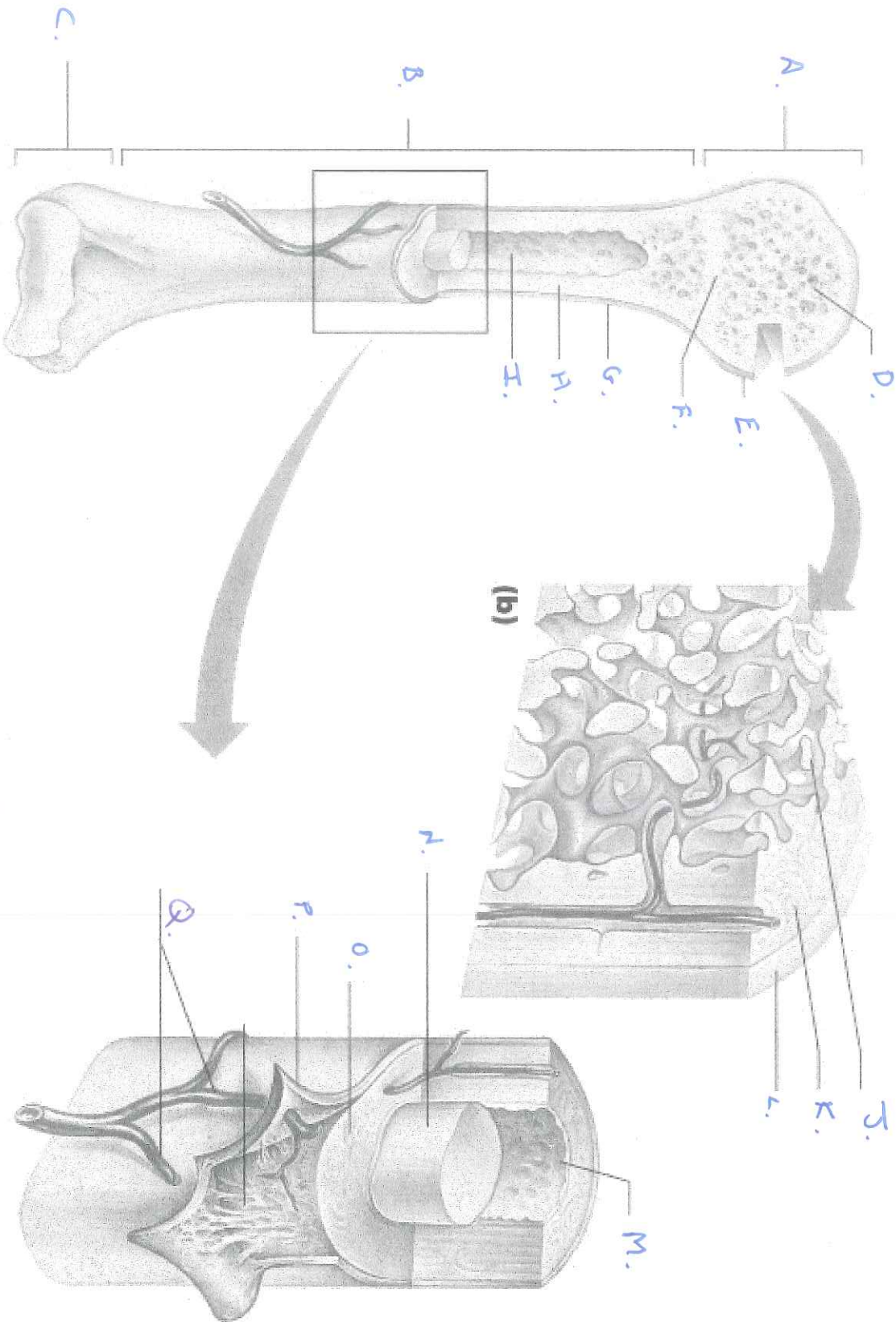
Name: _____
Period: _____

Mid-Term Review Sheets

Dr. Kelly

Structure of a Long Bone

Label each letter



Copyright © 2006 Pearson Education, Inc., publishing as Benjamin Cummings.

Label the Skeleton

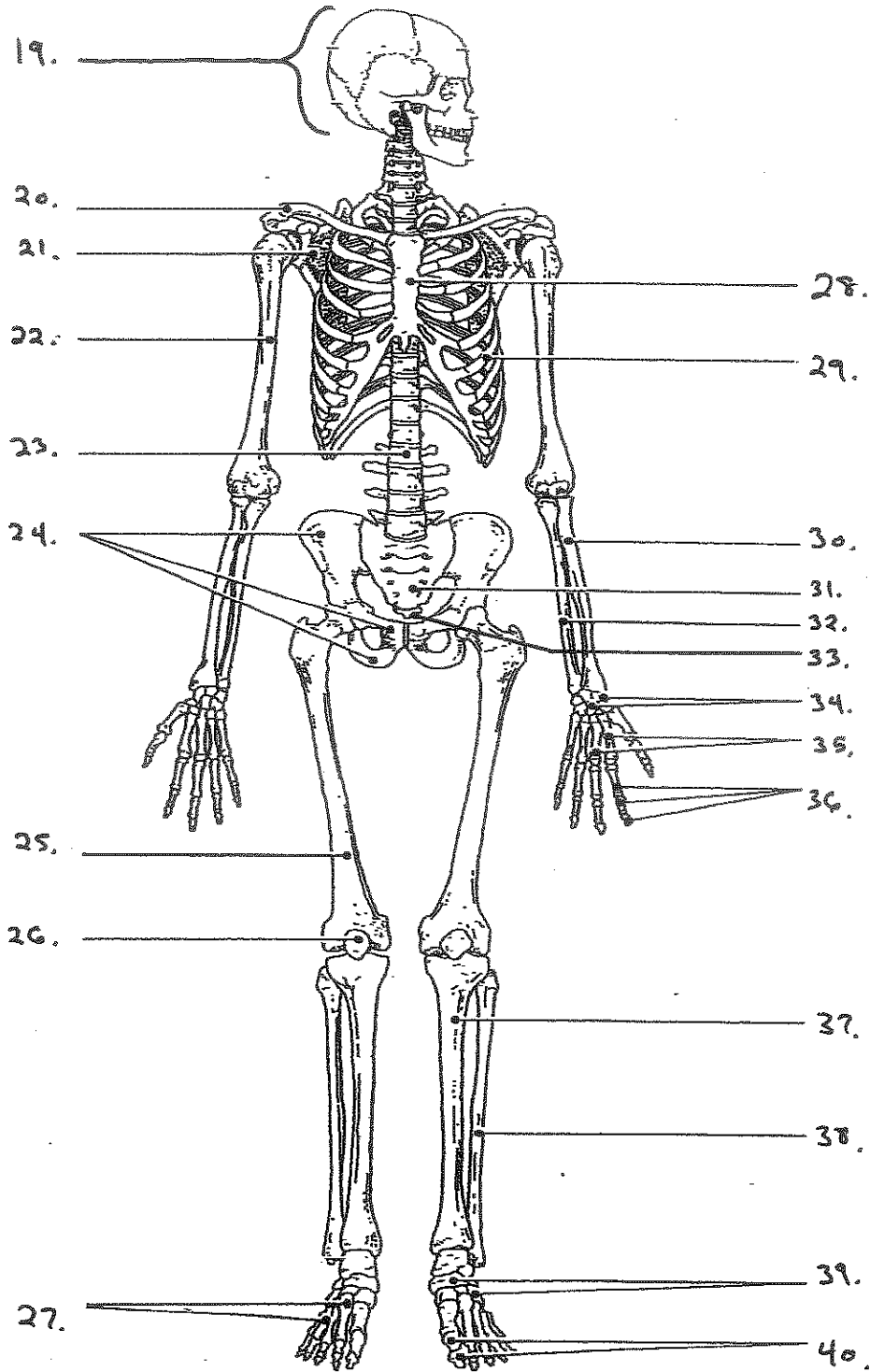


TABLE 1

Orientation and Directional Terms

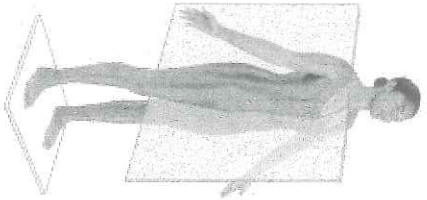
Term	Definition	Illustration
A.	Toward the head end or upper part of a structure or the body; above	
B.	Away from the head end or toward the lower part of a structure or the body; below	
C.	Toward or at the front of the body; in front of	
D.	Toward or at the backside of the body; behind	
E.	Toward or at the midline of the body; on the inner side of	
F.	Away from the midline of the body; on the outer side of	
G.	Between a more medial and a more lateral structure	
H.	Close to the origin of the body part or the point of attachment of a limb to the body trunk	
I.	Farther from the origin of a body part or the point of attachment of a limb to the body trunk	
J.	Toward or at the body surface	
K.	Away from the body surface; more internal	

†The term *caudal*, literally "toward the tail," is synonymous with *inferior* only to the inferior end of the :
 **Ventral* and *anterior* are synonymous in humans; this is not the case in four-legged animals. *Ventral* refers to the inferior surface of four-legged animals. Likewise, although the dorsal and posterior surfaces are the :
 an animal's back. Thus, the dorsal surface of four-legged animals is their superior surface.

Provide the term

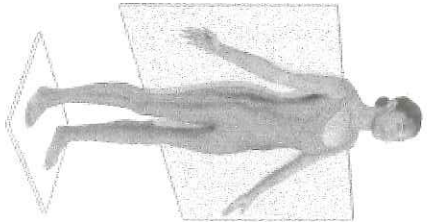
Body Planes and Sections

What is
Plane A ?



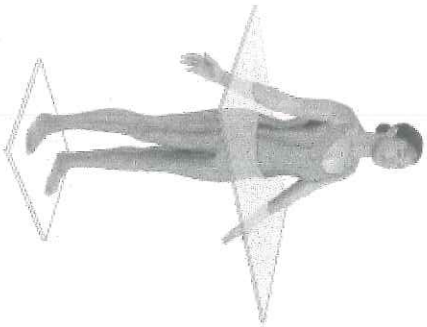
(a)

What is ?
Plane B :

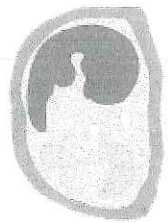
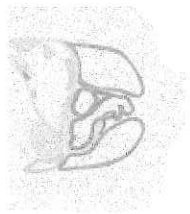
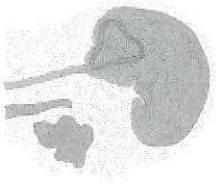
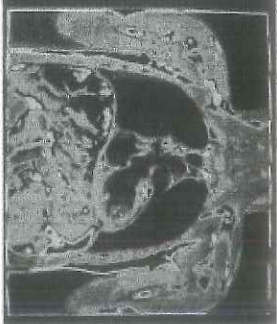
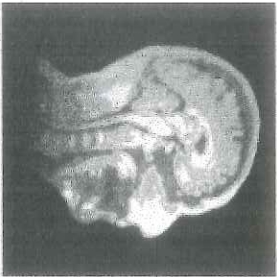


(b)

What is
Plane C ?



(c)



Identify each muscle AND its action.

Diagram 1 The Muscular System

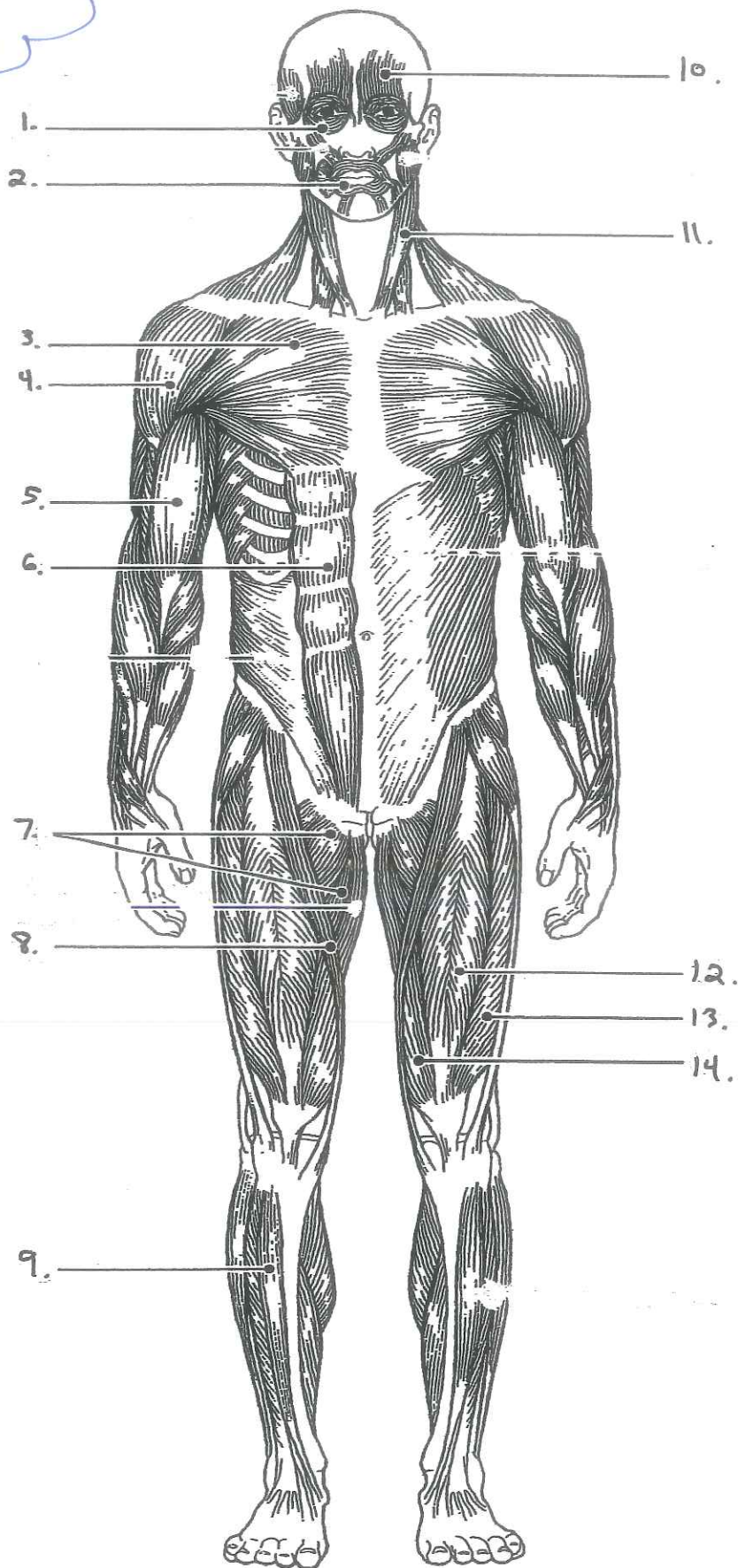
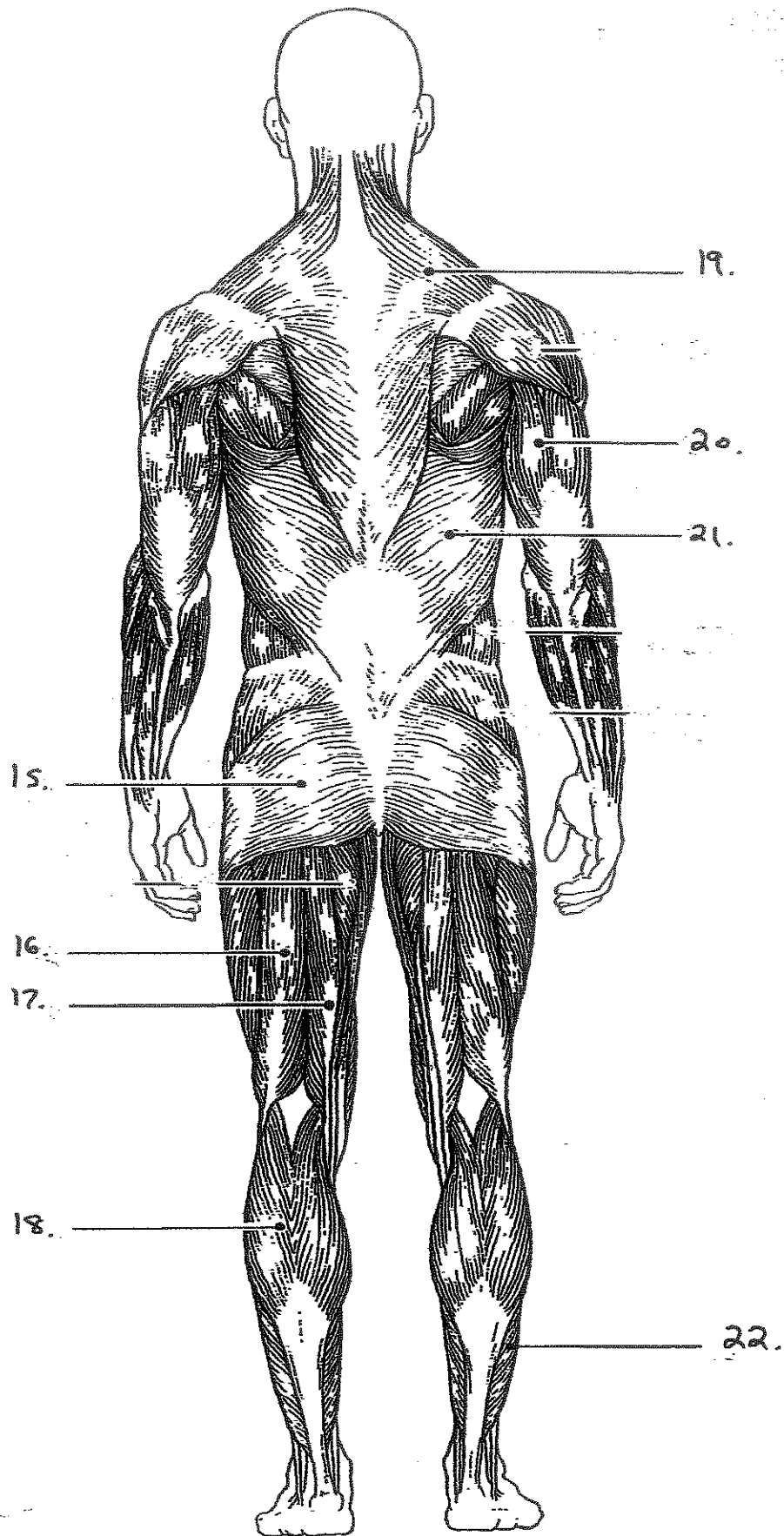
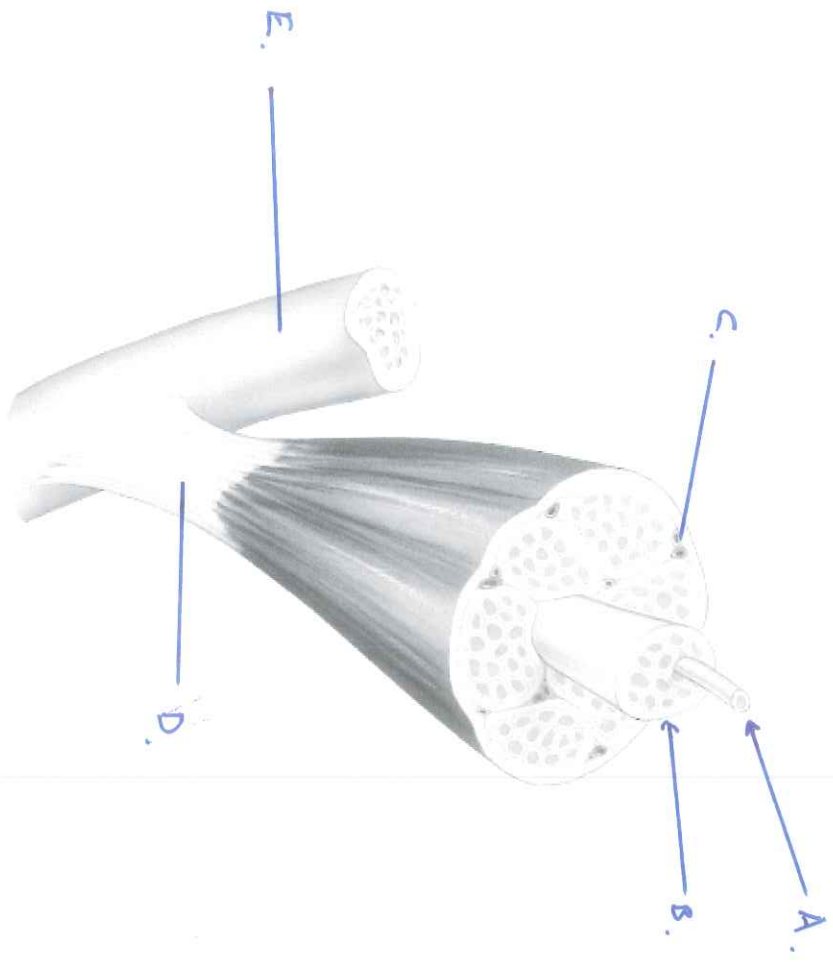


Diagram 2



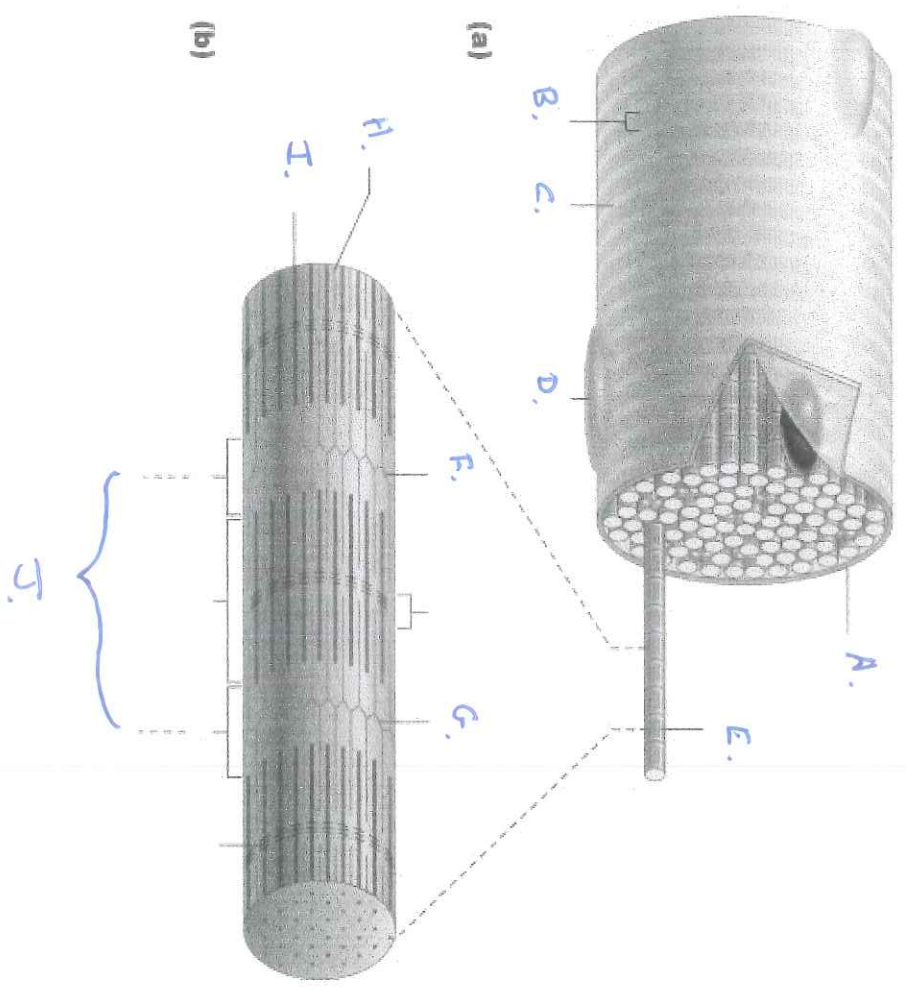
Skeletal Muscle
Structure of a Typical Muscle

Label the diagram



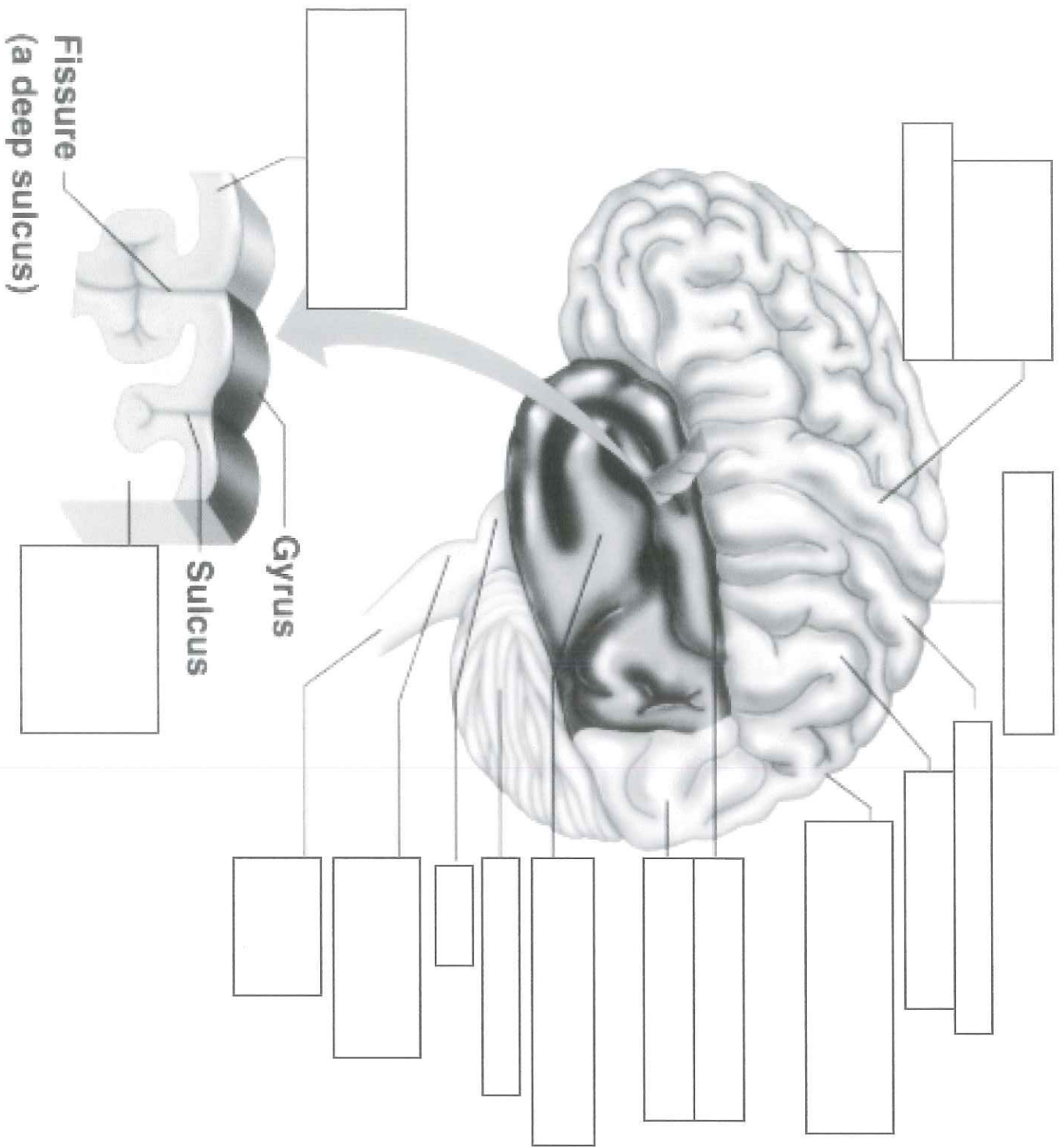
Anatomy of a Muscle Cell

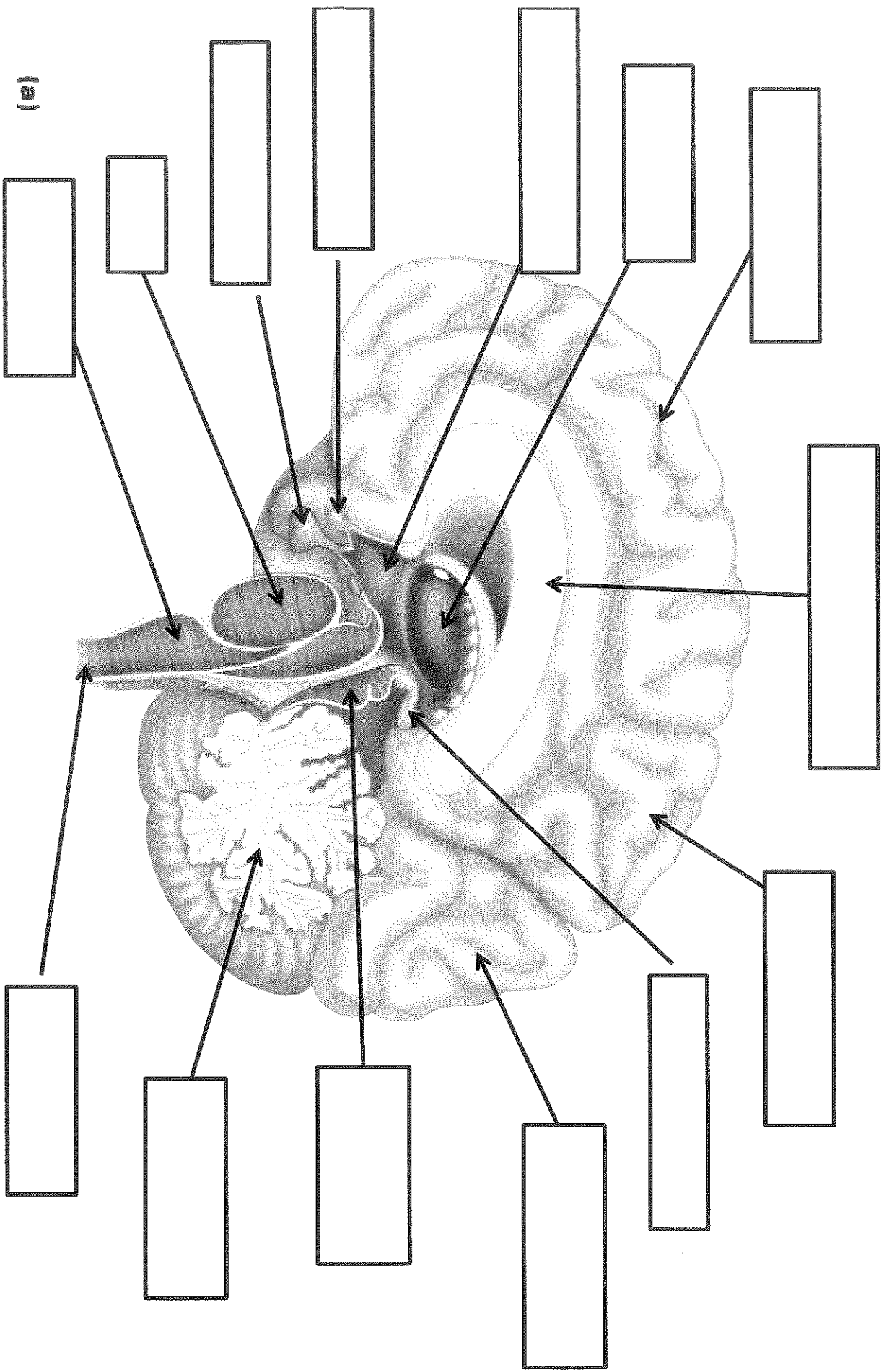
Label the diagram



The Brain

Label each structure with its name and function.





(a)

Skin Diagram

Label the diagram

