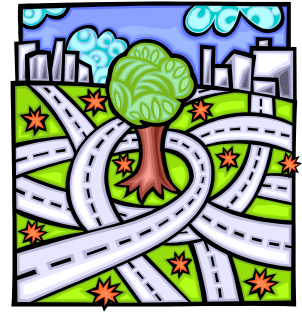


# FLHS Traffic Patterns for PARENTS

## Dropping off or Picking up Students



The police department and town engineering department helped determine the following procedures for our site to relieve congestion and improve safety. **Patience is still necessary!** If you have suggestions for improvements, do not hesitate to let an administrator or the PTA President know.

**#1. PRIMARY DROP-OFF AND PICK-UP:** The primary drop-off location is at the back of the school. Entry is at the intersection of Unquowa and Barlow Roads at the four-way stop. Exit the FLHS campus using either (a) the access road to Mill Plain, or (b) the middle school bus loop which brings you back to Unquowa Road. Please note: FLHS drivers **may not** use the RLMS bus loop between 7:45 and 8:15 in the morning and 2:40 and 3:15 in the afternoon.

**#2. WEBSTER DRIVEWAY DROP-OFF AND PICK-UP:** Entry is only from Unquowa Road. To drop off, pull over to the left at the dumpster area, drop your student off, and check for traffic passing on the right before continuing out. **Keep to the right** and drive all the way to the exit at the end of the student lot. You may exit **either** (a) to the right to Mill Plain, or (b) to the left in order to access the middle school bus loop which brings you back to Unquowa Road. Please note: FLHS drivers **may not** use the RLMS bus loop between 7:45 and 8:15 in the morning and 2:40 and 3:15 in the afternoon.

The **LOWER FRONT STAFF PARKING IS NOT A DROP-OFF OR PICK-UP LOCATION** With staff parking and students who walk and bike to school, we need this lot free of extra cars during the drop off and pick up times. .

**DROP-OFF AND PICK-UP DURING SCHOOL HOURS:** Students leaving *during* the school day (medical appointment, illness, etc.) should be picked up by the flag pole on the front circular driveway.

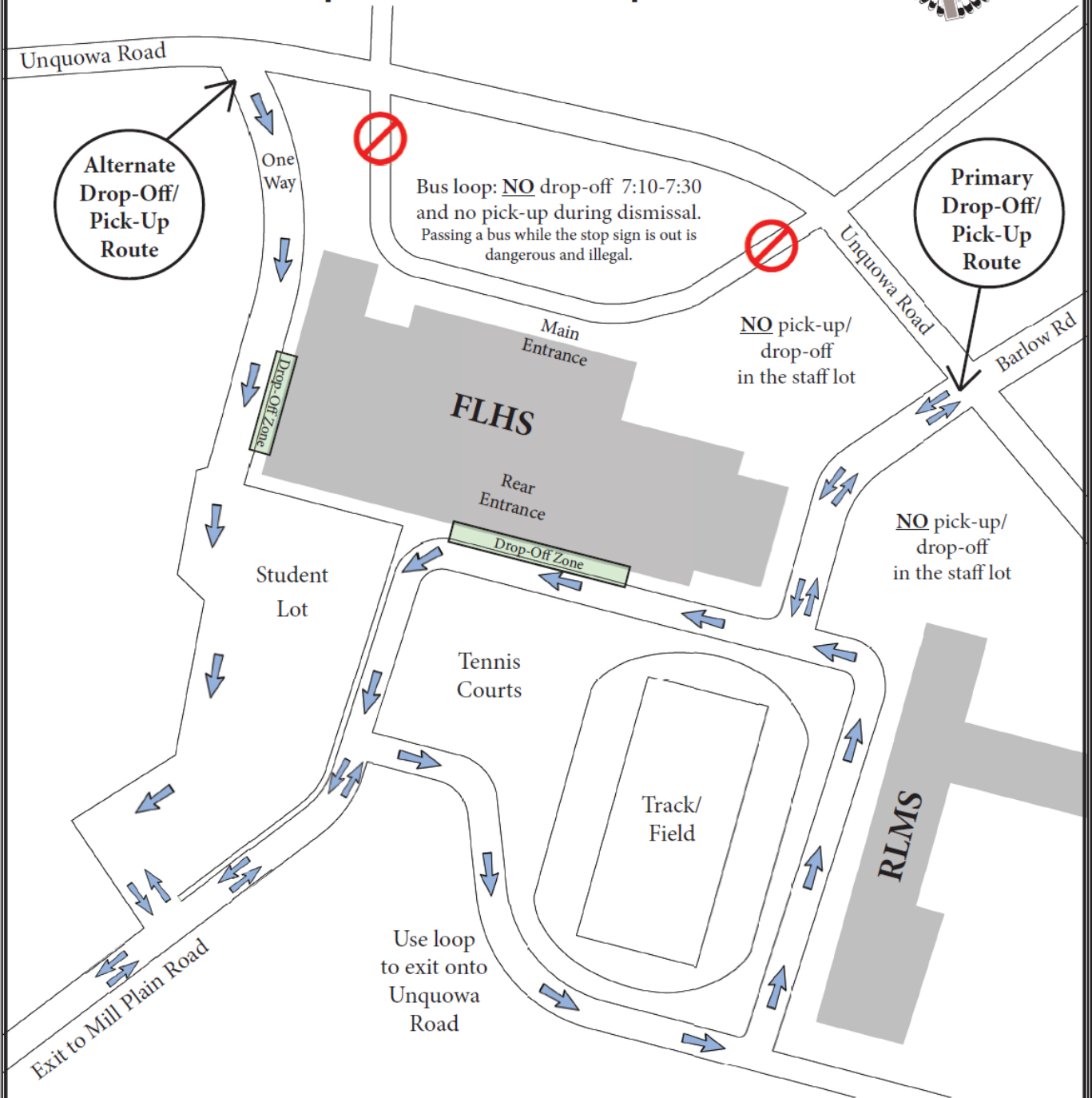
### **General Notes:**

- The entrance into the student lot from the access road by the tennis courts is for **students only**.
- The **front circular driveway may** be used during the posted times (7:45 a.m. and 1:45 p.m.). Do **not** use it otherwise as there is no room for cars when buses are loading and unloading.
- The **designated student parking lot** (behind the FLHS building) is designed to make it safer for our high school drivers and to make an orderly way for parents to drop off students for school. **Please keep in mind while using this lot that our young drivers are inexperienced and that pedestrians in the lot always have the right of way. Please always exercise caution.**
- **Please keep with the flow of traffic.** Do not stop to drop off your student on the school driveway *leading to* the drop off as this causes traffic to back up behind you.
- **Students should only get out on the sidewalk side of your car.**
- **At the back of the school, never pass unloading cars on the left.** There have been many near misses when cars pull out not expecting a car on the left.



- **You may use the middle school bus loop EXCEPT 7:45 to 8:15 in the morning and 2:40 to 3:15 in the afternoon. FYI, there are substantial penalties for passing a school bus with its red lights on and; the stop sign extended.**
- If possible, please have your students **ride their assigned bus.**
- **Do not use cell phones while driving, and do not exceed 20 mph on campus.**
- **Avoid road rage; Smile more.**

# Fairfield Ludlowe High School Student Drop-Off/Pick-Up Routes



**Please Drive Carefully**  
Try to arrive early to avoid traffic.  
Thank you for your cooperation.