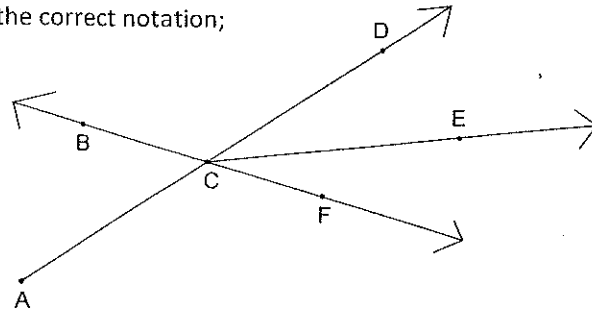


Quick Quiz 1.2

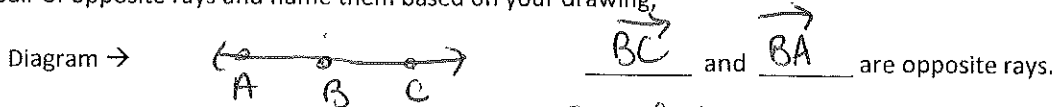
Name ANSWERS per. _____

Use the diagram to name each of the geometric terms in #1-5 using the correct notation;

- 1) Segment (name 2 ways if possible) $\overline{CF}, \overline{FC}$
- 2) Line (name 2 ways if possible) $\overleftrightarrow{BC}, \overleftrightarrow{CF}$
- 3) Ray (name 2 ways if possible) $\overrightarrow{BC}, \overrightarrow{BF}$
- 4) 3 collinear points B, C, F or A, C, D
- 5) 4 noncollinear points (any 4 pts) A, C, D, F
- 6) The intersection of ray BF and ray CB \overline{CB}



7) Draw a pair of opposite rays and name them based on your drawing;

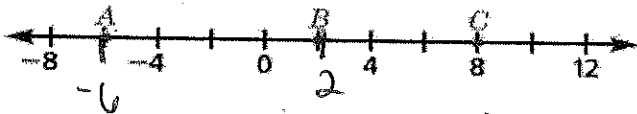


8) How many planes can pass through 3 collinear points? ∞ infinite

Exit Ticket:

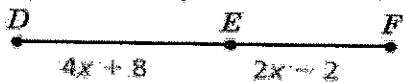
Name ANSWERS period _____

1. What is AB ?



3) $AB =$ 8

2. If $DF = 120$, what are DE and EF ?



4) EQUATION: $4x + 8 + 2x - 2 = 120$

$x =$ 19

$DE =$ 84 $EF =$ 36

How comfortable do you feel with this topic?

Circle one:

- 1 2 3 4