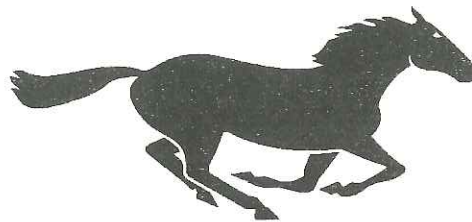


# 2013 – 2014 SCHOOL PROFILE

## FAIRFIELD WARDE HIGH SCHOOL

755 MELVILLE AVENUE  
FAIRFIELD, CT 06825  
MAIN OFFICE: (203)-255-8449  
FAX:(203)-255-8284

[fairfieldschools.org/schools/fwhs](http://fairfieldschools.org/schools/fwhs)



**W**ELCOMING **A**CADEMIC **R**ESPECTFUL **D**YNAMIC **E**THICAL

### ADMINISTRATION

James J. Coyne	Headmaster	203-255-8354
Caryn F. Campbell	Director, Pupil Services & Guidance	203-255-8388
David M. Ebling	Fitts Housemaster	203-255-8364
Deirdra A. Preis	Pequot Housemaster	203-255-8350
Steven L. Fekete	Townsend Housemaster	203-255-8362
Christopher M. Manfredonia	Athletic Director	203-255-8387

### SCHOOL COUNSELING STAFF

Nicole Colleran	Fitts Counselor	203-255-8365
Sara Coro	Fitts Counselor	
Linda Love	Fitts Counselor	
James Perna	Pequot Counselor	203-255-8351
Jill Cutter	Pequot Counselor	
Gloria Piché	Pequot Counselor	
Ali Chagnon	Townsend Counselor	203-255-8363
Gina DiGiacomo	Townsend Counselor	
Danielle Jurkiewicz	Townsend Counselor	

*All email addresses are first initial last name@fairfieldschools.org*

### COLLEGE & CAREER CENTER

College & Career Center	203-255-8357
Kate Lala	

*Please call our College and Career Center to schedule admissions representative visits.*

## OUR SCHOOL and COMMUNITY

Fairfield Warde High School is a comprehensive four-year high school with approximately 1480 students. The school is organized into three houses, each with a cross-section of students in grades 9-12. FWHS offers a full range of academic courses including 23 AP courses, 11 courses in the UCONN Early College Experience Program, thirty-seven varsity athletic teams, and a wide range of student organizations and activities. Many students actively participate in community service and volunteer projects.

Fairfield Connecticut, situated fifty miles from New York City between Bridgeport and Westport, is primarily a residential community of 57,340. The per-pupil expenditure for the 2010-11 school year was \$14,834.

FWHS is accredited by the Connecticut State Department of Education and the New England Association of Schools and Colleges.

### GRADUATION REQUIREMENTS

43 credits including:

8	English	6	Science
6	Social Studies (2 in US History and 1 in Civics)	3.2	PE/Health
6	Mathematics	2	Arts/Vocational

*Demonstrate Computer Proficiency*

*Demonstrate Academic Proficiency on each of four areas of the CAPT*

CAPT is a statewide assessment administered to all public school students in grade ten. The CAPT includes four assessments: Reading, Mathematics, Science and Writing. The Goal score established by the state of Connecticut represents a demanding level of achievement and state legislation requires that CAPT results be included with every transcript. The Fairfield Board of Education policy requires students to be at the Proficient level on all four assessments to qualify for graduation. The percentage of students in the Class of 2014 who scored at or above goal level is as follows: 69.7% in Mathematics, 71.4% in Science, 67.3% in Reading, and 81.6% in Writing. 49.5% of the Class of 2014 scored at goal or better in all four subject areas.

### REGIONAL PROGRAMS

Some of our students participate in the following programs: Bridgeport Regional Vocational Aquaculture School and The Regional Center for the Arts.

### SUBJECT LEVEL GROUPING

Students are homogeneously grouped in English, Mathematics, Science, US History, and World Languages. Courses are offered on a semester or yearly basis. Semester-long courses that meet daily receive one credit and year-long courses that meet daily are awarded two credits.

Advanced Placement and UConn ECE: - i.e. AP Literature, AP Modern European History, AP Physics  
Level 1: Honors Courses (26 in total) – i.e. English 11, 21, US History 31, Pre-Calc 41  
Level 2: College Preparatory Courses - i.e. English 12, 22, Geometry 22, Biology 22  
Level 0: All classes ending in “0” are heterogeneously grouped i.e. Physics 40, Art 10, French 20

### RANK IN CLASS

Fairfield Warde High School does not report Rank in Class. A student's GPA is listed on the transcript and the GPA Distribution for the Class of 2014 can be found on page 3.

## MARKING SYSTEM

A+	97-100	C+	77-79
A	93-96	C	73-76
A-	90-92	C-	70-72
B+	87-89	D+	67-69
B	83-86	D	63-66
B-	80-82	D-	60-62
		F	59 & below

*Note: Due to our attendance policy, students may receive a passing grade for a course but receive 0 credit.*

## CLASS OF 2014 DATA

## ACT MEAN TEST SCORES

English	Math	Reading	Science	COMP
24.9	24.4	24.4	23.9	24.4

## WEIGHTING SYSTEM USED TO COMPUTE OFFICIAL GPA\*

Grade	Advanced Placement	Level 1	Level 0	Level 2
A+	5.00	4.67	4.67	4.33
A	4.67	4.33	4.33	4.00
A-	4.33	4.00	4.00	3.67
B+	4.00	3.67	3.67	3.33
B	3.67	3.33	3.33	3.00
B-	3.33	3.00	3.00	2.67
C+	3.00	2.67	2.67	2.33
C	2.67	2.33	2.33	2.00
C-	2.33	2.00	1.67	1.67
D+	2.00	1.67	1.33	1.33
D	1.67	1.33	1.00	1.00
D-	1.33	1.00	0.67	0.67
F	0.00	0.00	0.00	0.00

\*All subjects are considered except pass/fail courses and PE/Health

## SAT TEST SCORES

Average for the middle 50% of the Class of 2013

Cr Read: 545 Math: 565 Writing: 560

Average for the top 10% of the Class of 2013

Cr Read: 688 Math: 710 Writing: 704

## AP EXAMS

273 students were administered 518 AP Exams in 23 subjects: 86% of the scores were 3 or above.

## POST HIGH SCHOOL PLANS

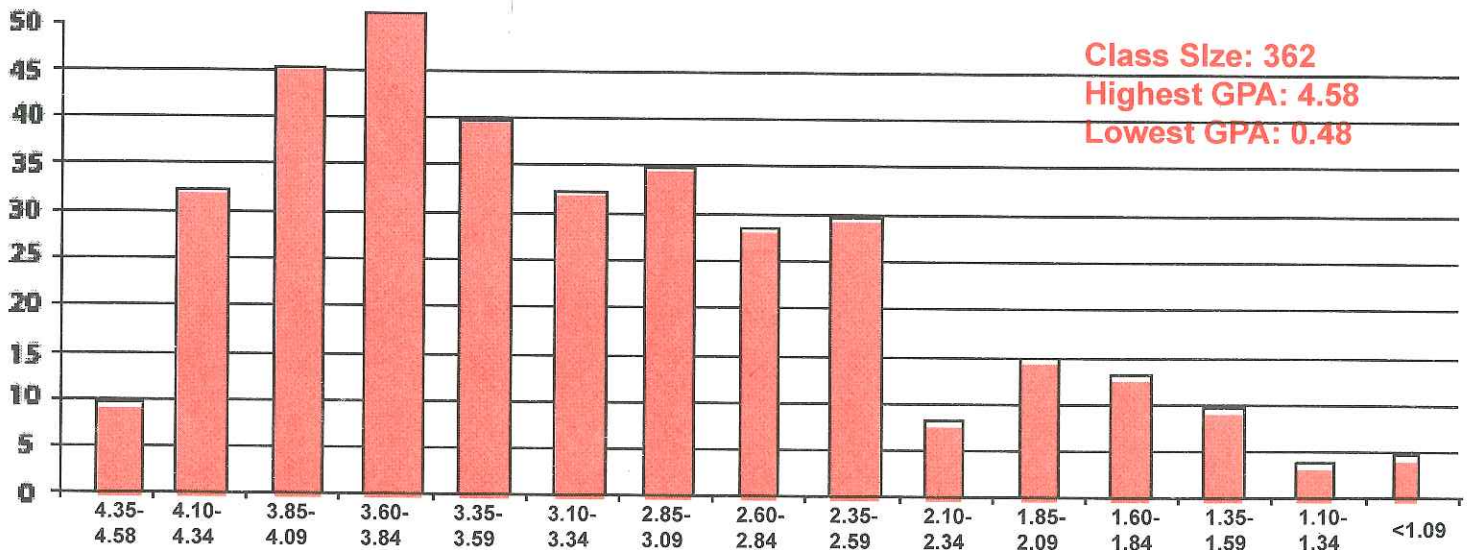
86 % of the students in the Class of 2013 are continuing their education

73 % at Four Year Colleges

13 % at Two Year Colleges

The Class of 2013 submitted over 1900 applications to colleges and universities. More than 60% were acceptances.

## GPA DISTRIBUTION CLASS OF 2014



## A SAMPLING OF COLLEGES ATTENDED BY OUR GRADUATES

Adelphi University	College of the Holy Cross	Gateway Community College	Manhattanville College	Parsons School of Design	St. John's College	University of New Hampshire
Alfred University	College of William and Mary	George Mason University	Mannes College of Music	Paul Smith's College	St. Vincent's College	University of New Haven
American University	Colorado College	George Washington University	Marist College	Pennsylvania State University	Stanford University	UNC Chapel Hill
Amherst College	Concordia University	Georgetown University	Marlboro College	Pepperdine University	Stevens Institute of Technology	University of Notre Dame
Arcadia University	Connecticut College	Gettysburg College	Marquette University	Philadelphia University	Stonchill College	University of Pennsylvania
Arizona State University	Cornell University	Green Mountain College	Mass. College of Art & Design	Pitzer College	Stony Brook University	University of Rhode Island
Art Institute of Boston	Creighton University	Hampshire College	MIT	Plymouth State University	Suffolk University	University of Richmond
Assumption College	Culinary Institute of America	Hartwick College	McGill University	Princeton University	SUNY Albany	University of Rochester
Bard College	Curry College	Harvard University	Merrimack College	Providence College	Swarthmore College	University of Scranton
Barnard College	Dartmouth College	Haverford College	Miami Dade College	Purdue University	Syracuse University	University of South Carolina
Bates College	Dean College	High Point University	Miami University, Oxford	Quinnipiac University	Temple University	University of Southern California
Bennington College	DePaul University	Hobart & William Smith Colleges	Michigan State University	Randolph-Macon College	The New School	University of Tampa
Bentley University	DeSales University	Hofstra University	Middlebury College	Reed College	Towson University	University of Vermont
Berklee College of Music	Dickinson College	Houston Community College	Milwaukee Inst. of Art & Design	Rensselaer Polytechnic Institute	Trinity College	University of Virginia
Binghamton University	Eckerd College	Hunter College	Mitchell College	Rhode Island College	Trinity College Dublin	University of Wisconsin
Boston College	Duke University	Indiana University	Montana State University	Rhode Island School of Design	Trufts University	Ursinus College
Boston University	Duquesne University	Ithaca College	Mount Ida College	Roanoke College	Tulane University	Vanderbilt University
Bowdoin College	Eastern Connecticut St. Univ.	James Madison University	Mount Saint Mary College	Rochester Institute of Tech.	Union College	Vassar College
Brandeis University	Eckerd College	Johns Hopkins University	Muhlenberg College	Roger Williams University	Universidad Central de Venezuela	Villanova University
Bridgewater State College	Elizabethtown College	Johnson & Wales University	New England College	Rutgers	University of Alabama	Virginia Wesleyan College
Brown University	Elmira College	Johnson State College	New England Conserv. of Music	Sacred Heart University	University of Arizona	Wake Forest University
Bryant University	Elon University	Keene State College	New Hampshire Institute of Art	Saint Joseph College	University of Bridgeport	Washington and Lee University
Bucknell University	Embry-Riddle	Lafayette College	New York Film Academy	Saint Joseph's University	University of California	Washington College
Carnegie Mellon University	Emerson College	Lasell College	New York Institute of Tech.	Saint Michaels College	University of Chicago	Wentworth Institute of Technology
Case Western Reserve Univ.	Emory University	Lehigh University	New York University	Salisbury University	University of Colorado	Wesleyan University
Catholic University	Endicott College	Lesley University	Newbury College	Salve Regina University	University of Connecticut	West Virginia University
Central Connecticut State Univ.	Fairfield University	Lewis & Clark College	Nichols College	Savannah College of Art and Design	University of Dayton	Western Connecticut State University
Champlain College	Fashion Institute of Tech.	Louisiana State University	North Carolina State University	School of the Art Institute of Chicago	University of Delaware	Western New England College
Clark University	Florida Institute of Tech.	Loyola Marymount University	Northeastern University	School of Visual Arts	University of Hartford	Westminster College
Clarkson University	Florida State University	Loyola University Maryland	Northwestern University	Seton Hall University	University of Kansas	Wheaton College
Clemson University	Fordham University	Lynchburg College	Norwalk Community College	Siena College	University of Maine	Wheelock College
Coastal Carolina University	Framingham State College	Lynn University	Ohio Wesleyan University	Skidmore College	University of Mary Washington	Williams College
Colby College	Franklin and Marshall College	Macalester College	Old Dominion University	Southern Connecticut State University	University of Maryland	Worcester Polytechnic Institute
Colgate University	Franklin Pierce University	Maine College of Art	Pace University	Springfield College	University of Massachusetts	Xavier University
College of Charleston	Frostburg State University	Manhattan College	Paier College of Art	St. Bonaventure University	University of Michigan	Yale University

## 2013-2014 COURSE OFFERINGS

<b>ENGLISH</b>	<b>SOCIAL STUDIES</b>	<b>ART</b>	<b>FAMILY CONSUMER SCIENCE</b>	<b>WORLD LANGUAGES</b>
English 11, 12	Global Studies 10	Foundations in Art	Culinary Arts	Chinese 10,20,31,41
English 21, 22	Mod Global Studies 21,22	Intermediate Art	Food Services	French 10,20,31,41,42, 51,52,60 AP
English 31,32	Social Studies ELL	Drawing & Painting I	Child Development	Italian 10,20,31,41
ELL English	US History 31, 32	Advanced Draw & Painting	Early Childhood Education	Latin 10,20,31,41,AP
AP Lang & Comp	AP American Studies	3-Dimensional Design I	Ind. & Family Development	Spanish 10,20,31,41,42, 51,52,60,AP
AP Lang & Comp AmStudies	AP US Govt & Politics	Adv. 3 Dimensional Design	Fashion Merch. & Design	<b>PHYSICAL EDUCATION</b>
English 41, 42	AP Mod. European History	Introduction to Pottery	Fashion & Textiles Technology	Phys Ed 10,20,30,40
AP Literature	Civics&ContemporaryIssue	Introduction to Darkroom Photography	Interior Design	<b>READING</b>
Call of the Wild	Civics & Youth & Law	Intermediate Photography	<b>HEALTH</b>	Reading Strategies 10, 20
Contemporary Global Literature	Civics & Int'l Relations	Advanced Photography	Health 10,20,30,40	<b>TECHNOLOGY EDUCATION</b>
Creative Writing Workshop	Economics	Introduction to Digital Photography	<b>MUSIC</b>	CAD Drafting
Film Analysis & Criticism	Mod. European History 41	AP Studio Art	Beginning Piano/Keyboard	Computer Technology
Journalism	Psychology	Creative Computer Graphics I & II	Chamber Orchestra	Applied Mechanics 40,50
Poetry / Satire	AP US History	<b>BUSINESS</b>	Concert Band	Wood Manufacturing
Gender Perspectives in Literature	Humanities	Accounting	Concert Orchestra	Graphic Communications Technology
Supernatural in Literature	<b>MATHEMATICS</b>	Business Concepts & Careers	Jazz Ensemble	Engineering Robotics 10
Dramatic Literature & Performance	Algebra 12	Business Law	Symphonic Orchestra	Transportation Technology 10,20,30
<b>SCIENCE</b>	Geometry 21, 22	Business Mgmt. & Leadership	Wind Ensemble	<b>THEATRE ARTS</b>
Env. Earth Science 11,12	Algebra 31, 32	Bus. of Sports/Entertainment	Chamber Singers	Acting
Biology 21, 22	Personal Finance	Comp. Games Design & Prog.	Concert Choir	Performance Studio
Chemistry 31,32	Mathematical Modeling 42	Computer Infomation Systems	Women's Choir	<b>VIDEO/NEWS PRODUCTION</b>
AP Chemistry	PreCalculus 40, 41	Comp. Information Sys & Web Design	Music Theory	Broadcast Journalism
Physics 40,41,AP	Intro to Calculus	Entrepreneurship	Music Theory II	Video Production
AP Environmental Studies	AP Calculus AB	Marketing	Music Technology I & II	Movie Production
Astronomy 30	AP Calculus BC	AP Computer Science		Documentary Production
Crime Scene Forensics	Multivariable Calculus	AP Economics-Micro & Macro		
Crime Lab Forensics	AP Statistics	Introduction to Investing & Finance		
Human Anatomy & Phys-Maint.	Probability & Statistics 40	Internship and Career Exploration		
Human Anat. & Phys-Structure	Trigonometry 42	Advertising		
Marine Bio. & Oceanography		Personal Finance		
Meteorology		Robotic Programming		
AP Biology		Introduction to Business		