

Name: _____

Bio 21 Enzyme Review

1. A word ending in -ase indicates what?

enzyme

2. What is an enzyme?

is a protein, catalyst (↓ energy)

3. How does an enzyme function?

break/make by ↓ energy needed

4. How are enzymes named?

-ase based on substrate

5. What is the Lock and Key model? What are all the parts and how do they work?

enzy - stay same substrate - changes
active site - where reacts

6. What are the 4 factors that affect enzyme rate of reactions? Describe how each works. Draw a generic graph for each.

enzym conc
temp
pH

SA
subst. conc.

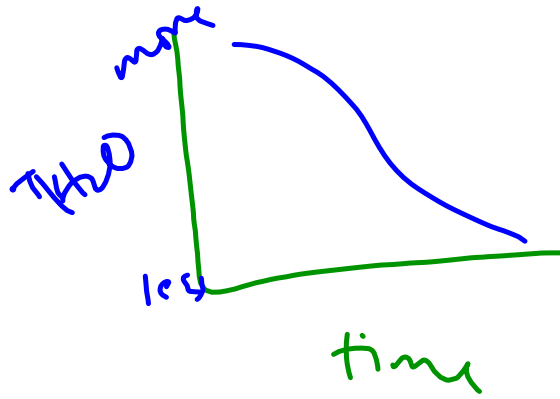
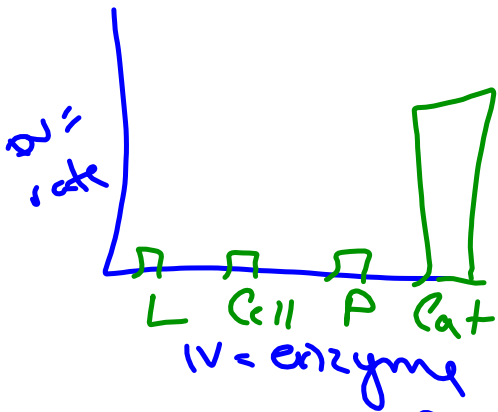
7. Write an hypothesis, problem.

If _____, then _____.

8. What is an IV, DV, control, variable held constant? Be able to identify.

*fix measure

***For this test you need to be able to do more than just regurgitate the facts. You must be able to apply the concepts to real examples (like the catalase(yeast lab)).**



If I use a different enzyme, then the H_2O_2 will not be broken down.

$L, Cell, P, Cat$