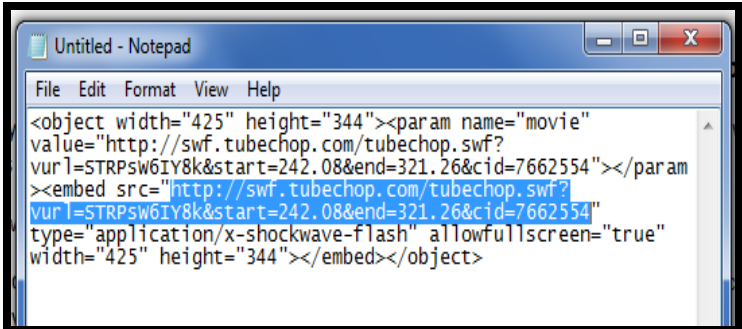


How to Embed a TubeChop Video in Your PowerPoint Presentation

You may want to embed a YouTube video in your PowerPoint presentation, but don't want to show the advertisement that appears before the video. Or, you may want to just show a small section of the YouTube video.

Here's what to do:

1. Once you've found a YouTube video you like, **COPY** the URL (web address) of the exact location of the video:
select the URL, then RIGHT CLICK > **Copy** or press **CTRL + C** on your keyboard
2. Go to <http://www.tubechop.com/> and **PASTE** the YouTube URL in the URL box: RIGHT CLICK > **Paste** or press **CTRL + V** on your keyboard
3. Press ENTER on your keyboard. You will see your YouTube video appear on the screen.
4. Move the gray sliders on either end of the video to set a new start and end point you want for the video
5. Select the **CHOP IT** button
6. You will see your new chopped video appear, with the EMBED CODE and some links to the right of it
7. **COPY** the entire **EMBED CODE**
8. Open a Word doc or Notepad file and **PASTE** the entire **EMBED CODE** in the Word doc or Notepad file
9. In that Word doc or Notepad file, look for the words embed src =
10. Select the URL that is just after that embed src = and between the " marks (as shown at right)
11. **COPY** that entire URL you just selected



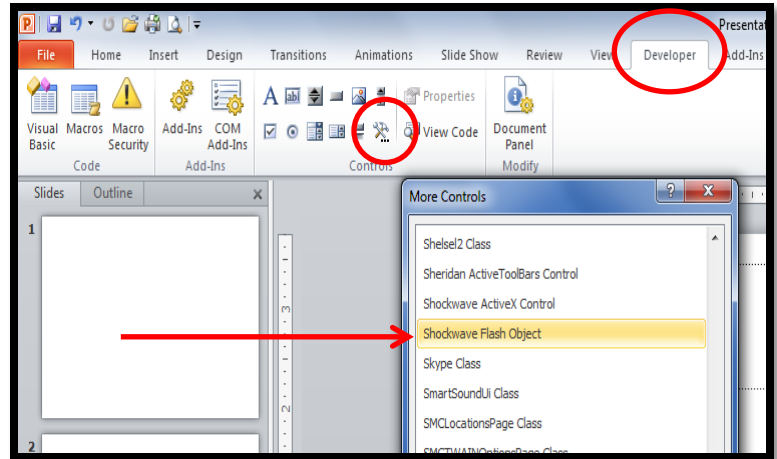
```
File Edit Format View Help
<object width="425" height="344"><param name="movie"
value="http://swf.tubechop.com/tubechop.swf?
vurl=STRPsw6IY8k&start=242.08&end=321.26&cid=7662554"></param
><embed src="http://swf.tubechop.com/tubechop.swf?
vurl=STRPsw6IY8k&start=242.08&end=321.26&cid=7662554"
type="application/x-shockwave-flash" allowfullscreen="true"
width="425" height="344"></embed></object>
```

12. Go to your PowerPoint project and insert a new slide with the **Title Only** layout: select the **HOME** tab > **New Slide** > **Title Only**

13. In your PowerPoint project, select the **DEVELOPER** tab

14. From the **CONTROLS** section on the **DEVELOPER** tab, select **MORE CONTROLS** (hammer and wrench icon)

15. The **MORE CONTROLS** dialog box will appear. Scroll down and select **SHOCKWAVE FLASH OBJECT** (as shown at right)



16. Select **OK**

17. You will see a + sign appear on your PowerPoint slide. Click and drag the + to create a box that you want the video to be on the slide.

18. A big white box with an X on it will appear on your slide. Do **NOT** resize it, or the link will not work. You can move it to an appropriate place on the slide though.

19. **RIGHT CLICK** on the big white box and select **PROPERTIES**

20. A **PROPERTIES** box will appear on the left side of the screen (as shown at right)

21. Scroll down and find where it states **MOVIE**. In the **PROPERTIES** column just to the right of **MOVIE**, **PASTE** your **EMBED CODE** URL that you copied from step 10 on the preceding page.

22. Press **ENTER** on your keyboard, then close the **PROPERTIES** box

23. To test your YouTube video, **PLAY** your Powerpoint slideshow: select the **Slide Show** tab, then the **From Current Slide** button

