

③

$$2k + k + 45 = 180$$

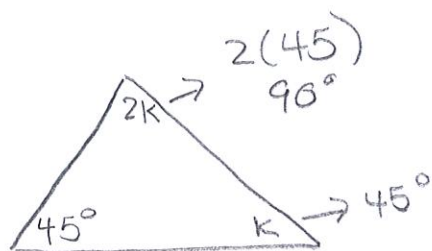
$$3k + 45 = 180$$

$$-45 \quad -45$$

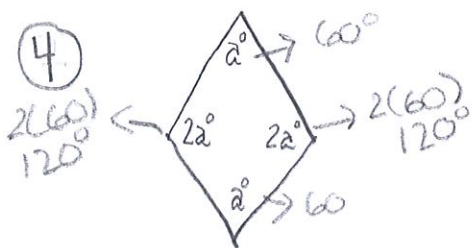
$$\frac{3k}{3} = \frac{135}{3}$$

$$k = 45^\circ$$

Angles:



④

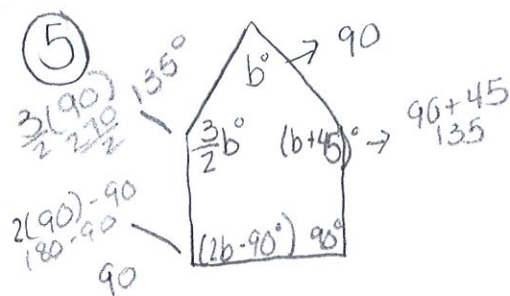


$$2a + a + 2a + a = 360$$

$$\frac{6a}{6} = \frac{360}{6}$$

$$a = 60^\circ$$

⑤



~~$$2b - 90 + \frac{3}{2}b + b + b + 45 + 90 = 540$$~~

$$2b - 90 + \frac{3}{2}b + b + b + 45 + 90 = 540$$

$$5\frac{1}{2}b - 90 + 45 + 90 = 540$$

$$5\frac{1}{2}b + 45 = 540$$

$$-45 \quad -45$$

$$5\frac{1}{2}b = 495$$

$$\frac{5.5b}{5.5} = \frac{495}{5.5}$$

$$b = 90$$

$$\textcircled{6} \quad 10x + 2 = 32$$

$$-2 \quad -2$$

$$\frac{10x}{10} = \frac{30}{10}$$

$$x = 3$$

$$\begin{array}{r} 19 - 4c = 17 \\ -19 \quad -19 \\ \hline -4c = -2 \\ \frac{-4}{-4} \quad \frac{-2}{-4} \end{array}$$

$$c = \frac{-2}{-4} \text{ or } \frac{1}{2} \text{ or } .5$$

$$1.1x + 1.2x - 5.4 = -10$$

$$\begin{array}{r} 2.3x - 5.4 = -10 \\ +5.4 + 5.4 \\ \hline 2.3x = -4.6 \\ \frac{2.3x}{2.3} = \frac{-4.6}{2.3} \end{array}$$

$$x = -2$$

$$\frac{2}{3}h - \frac{1}{3}h + 11 = 8$$

$$\begin{array}{r} \frac{1}{3}h = -3 \\ \frac{1}{3} \quad \frac{1}{3} \\ \hline \frac{-3 \cdot \frac{3}{1}}{\frac{1}{1} \cdot \frac{3}{1}} \end{array}$$

$$h = -9$$

$$6(5 - 8v) + 12 = -54$$

$$30 - 48v + 12 = -54$$

$$\begin{array}{r} 42 - 48v = -54 \\ -42 \quad -42 \\ \hline -48v = -96 \end{array}$$

$$v = 2$$

$$\begin{array}{r} 21(2 - x) + 12x = 44 \\ 42 - 21x + 12x = 44 \\ 42 - 9x = 44 \\ -42 \quad -42 \\ \hline -9x = 2 \end{array}$$

$$\frac{-9x}{-9} = \frac{2}{-9}$$

$$x = -\frac{2}{9}$$

$$-2(7 - y) + 4 = -4$$

$$-14 - 2y + 4 = -4$$

$$-10 - 2y = -4$$

$$-2y = 6$$

$$y = 3$$

\*didn't multiply the -2 through for  $-2 * -y$ , did  $2 * y$ .

$$C = 15n + 85$$

$$\begin{array}{r} 385 = 15n + 85 \\ -85 \quad -85 \\ \hline 300 = 15n \end{array}$$

$$\frac{300}{15} = \frac{15n}{15}$$

$$n = 20$$

20 watches

(14) Add all the heights together to get 26 feet.

$$6 + x + x = 26$$

$$\begin{array}{r} 6 + 2x = 26 \\ -6 \quad -6 \\ \hline \end{array}$$

$$\frac{2x}{2} = \frac{20}{2}$$

$$x = 10$$

Each story is 10 ft

(15)  $4(b+3) = 24$

$$\begin{array}{r} 4b + 12 = 24 \\ -12 \quad -12 \\ \hline \end{array}$$

$$\frac{4b}{4} = \frac{12}{4}$$

$$b = 3$$

(16)  $1(2p + 1.50) + .15(2p + 1.50) = 11.50$

Cost of meal                      Cost of tip

$$2p + 1.50 + .30p + .225 = 11.50$$

$$\begin{array}{r} 2.3p + 1.725 = 11.50 \\ -1.725 \quad -1.725 \\ \hline \end{array}$$

$$\frac{2.3p}{2.3} = \frac{9.775}{2.3}$$

$$p = 4.25$$