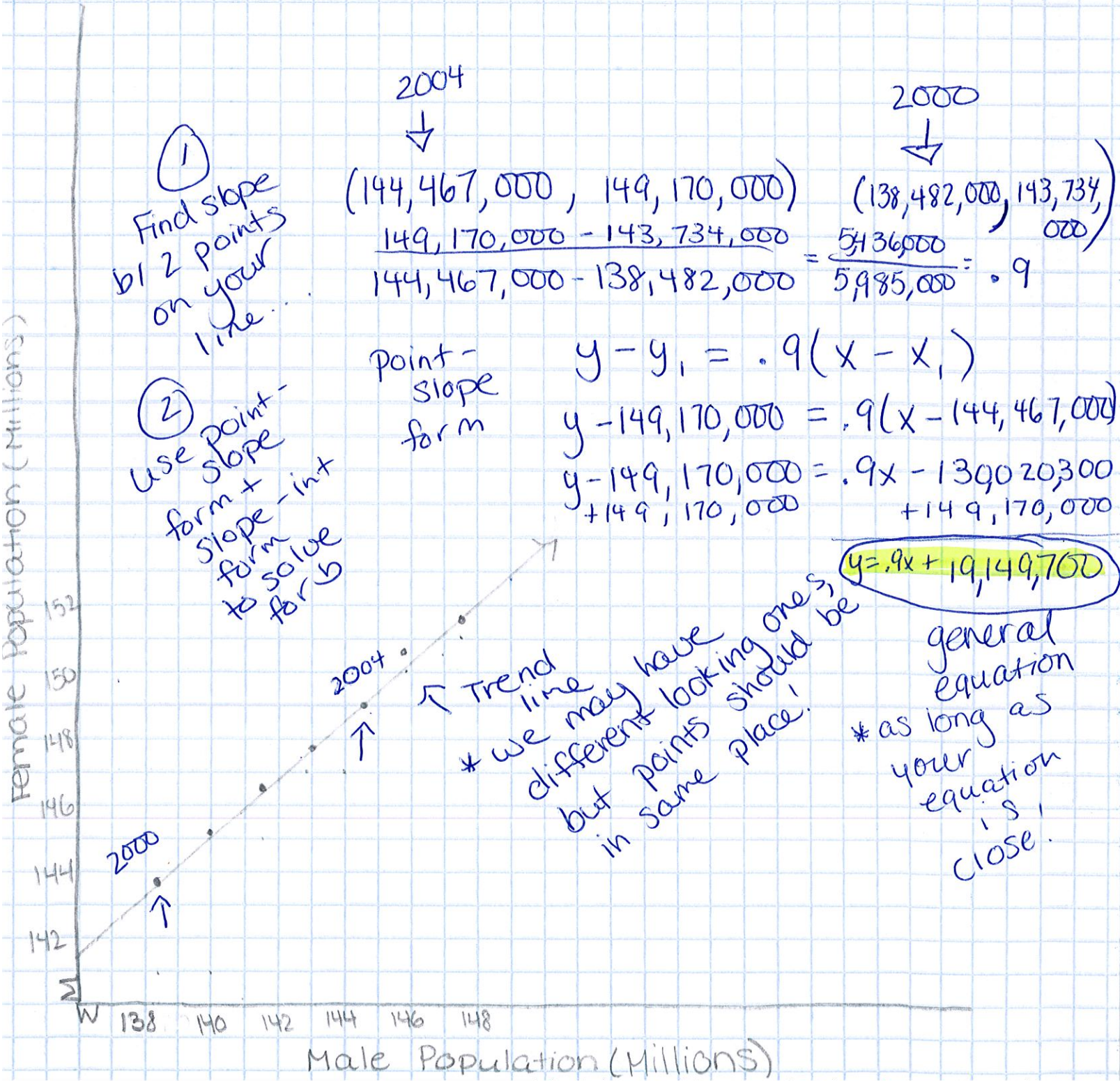


# US population

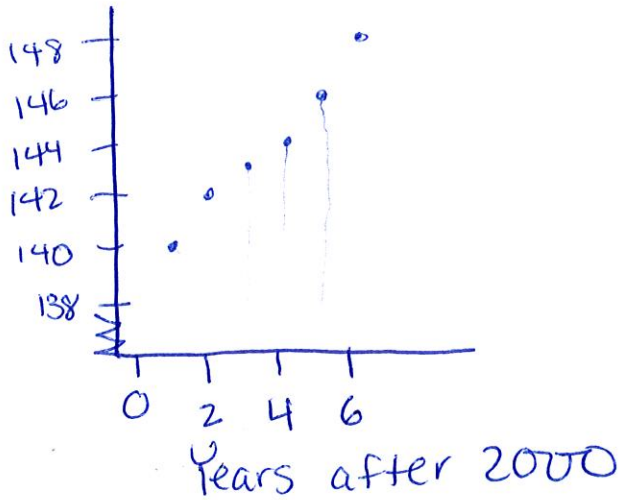
1-3 \* Keep in mind the data table was represented in thousands so those numbers are in millions.



④ Depends on equation used:

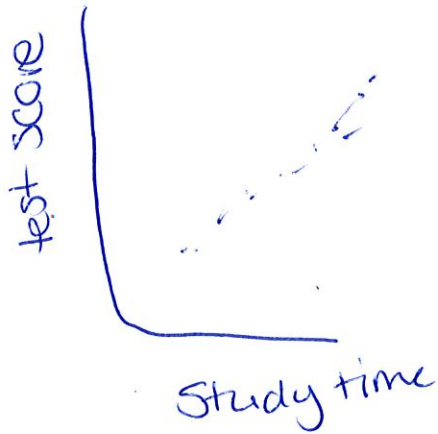
general estimate: 158,000,000 females

⑤



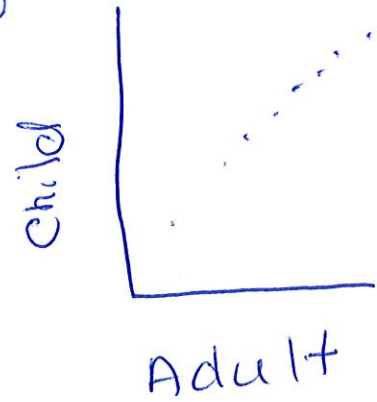
⑥ Since you only have 6 years of data and it is not linear, stretching it out 29 more years might not be super accurate.

①



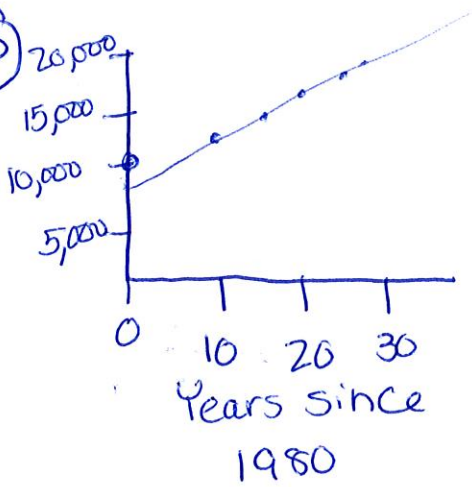
positive correlation

②



positive

③



⑤ around  $y = 318x + 9735$

⑥ 22,455,000 people (est.)