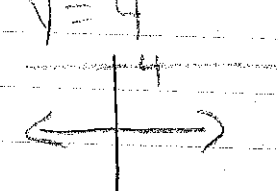


Pg. 312 (7-51 every 3rd)

7) $y = 3x + 1$
Slope = 3
y-int = 1

10) $y = -3x + 2$
Slope = -3
y-int = 2

13) $y = 4$



Slope = 0
y-int = 4

16) $y = 1x - 1$

19) $y = .7x - 2$

22) $y = -\frac{1}{2}x + 3$

25) $y = -2x + 4$

28) $(0, 3)$ ✓
 $(2, 5)$

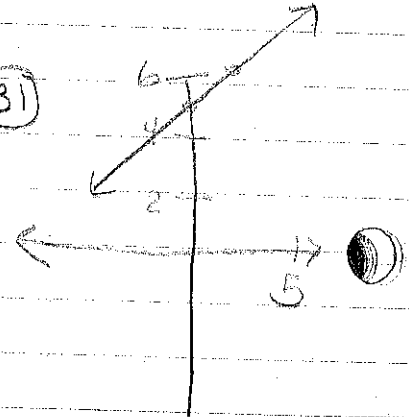
$$\frac{5-3}{2-0} = \frac{2}{2} = 1$$

$$3 = 1(0) + b$$

$$3 = b$$

$$y = 1x + 3$$

31)



34) $y = 7.50x - 5$

* start at -5

* go up 7.5, then right 1

37) $y - 2 = -3x$
 $y = -3x + 2$

Slope = -3

y-int = 2

40) $2y - 6 = 3x + 6$

$$\frac{2y}{2} = \frac{3x + 6}{2}$$

$$y = \frac{3}{2}x + 3$$

Slope = $\frac{3}{2}$

y-int = 3

43) $y = (2-d)x + d$
Slope y-int

46

- Student used slope as y-int
- Student used y-int as slope

49

$$2y + 4x = 0$$

$$2y = -4x$$

$$y = -\frac{4}{2}x$$

$$y = -2x$$

