

Pg. 52 (4-28)

④ Yes

⑤ No, it is flipped.

A translation only moves up + down or side to side.

⑥ No, it is flipped

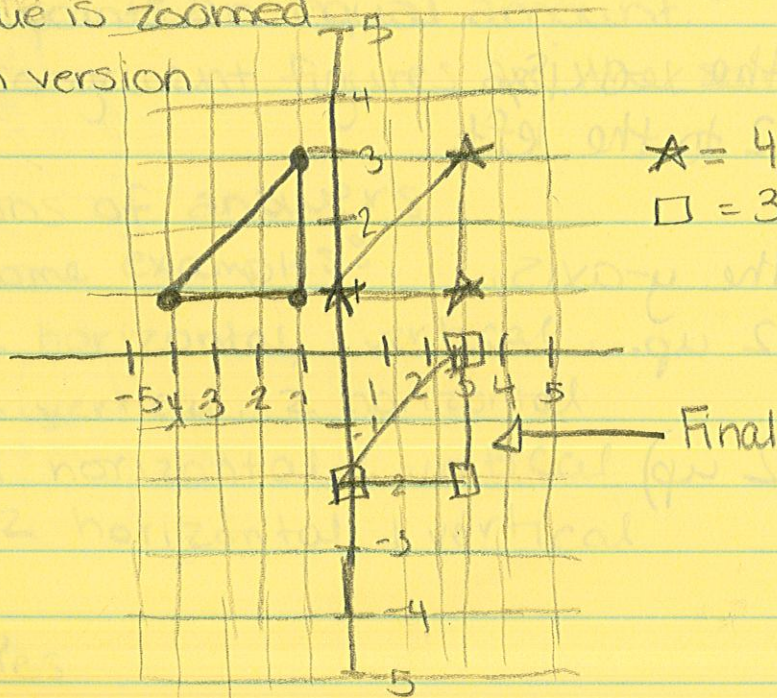
⑦ Yes

⑧ Yes

⑨ No, not congruent

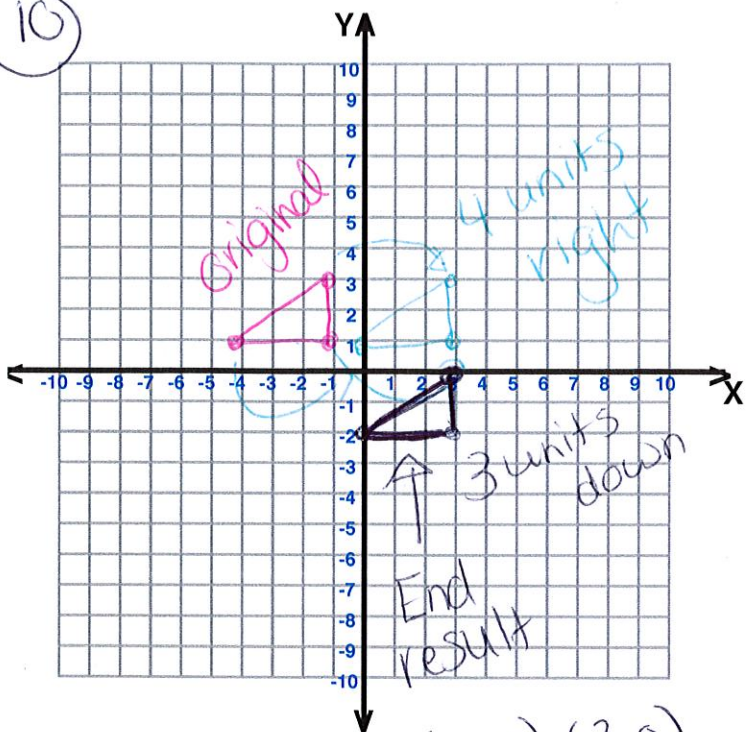
blue is zoomed in version

⑩



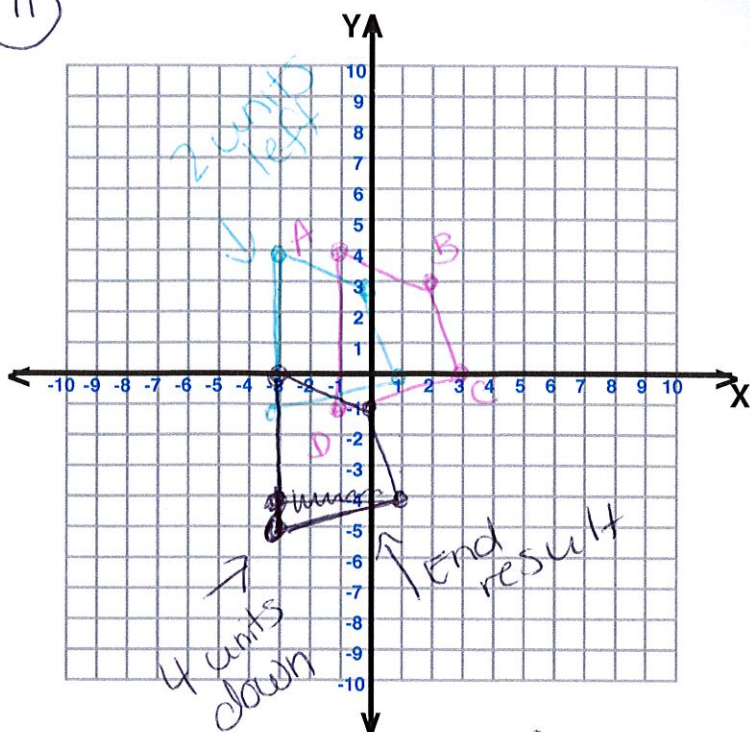
★ = 4 units right
□ = 3 units down

10



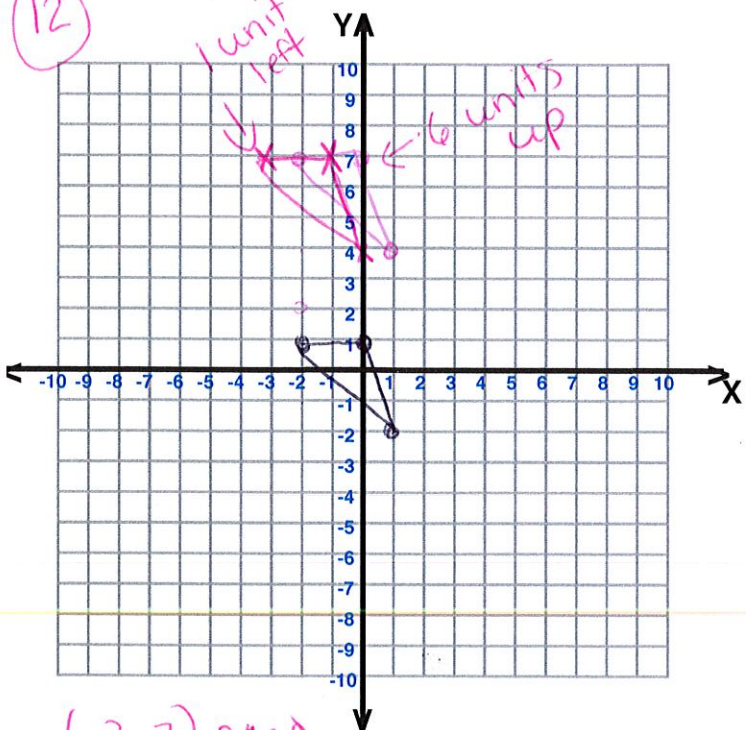
$(0, -2)$ $(3, 0)$
 $(3, -2)$

11



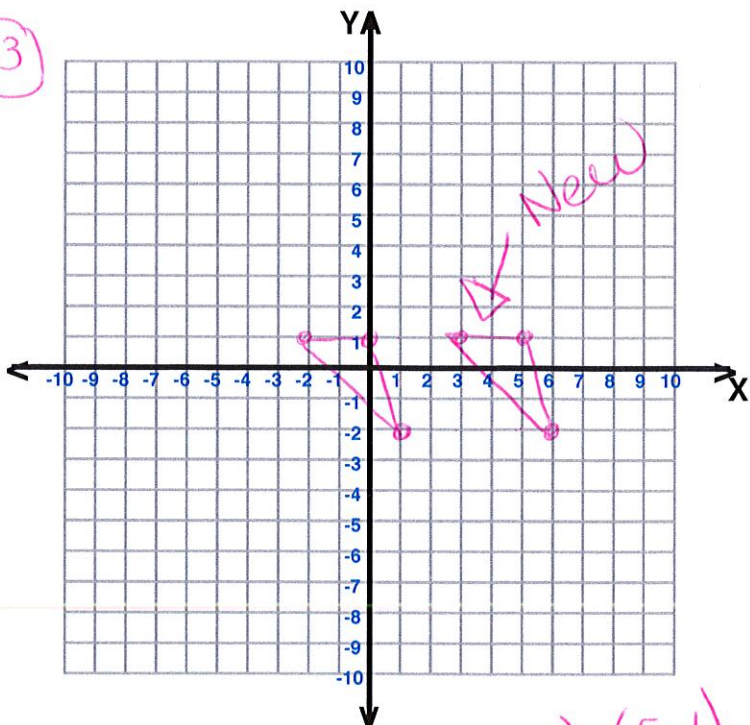
$(-3, 0)$ $(0, -1)$
 $(-3, -5)$ $(1, -4)$

12



$(-3, 7)$
 $(0, 4)$ $(-1, 7)$

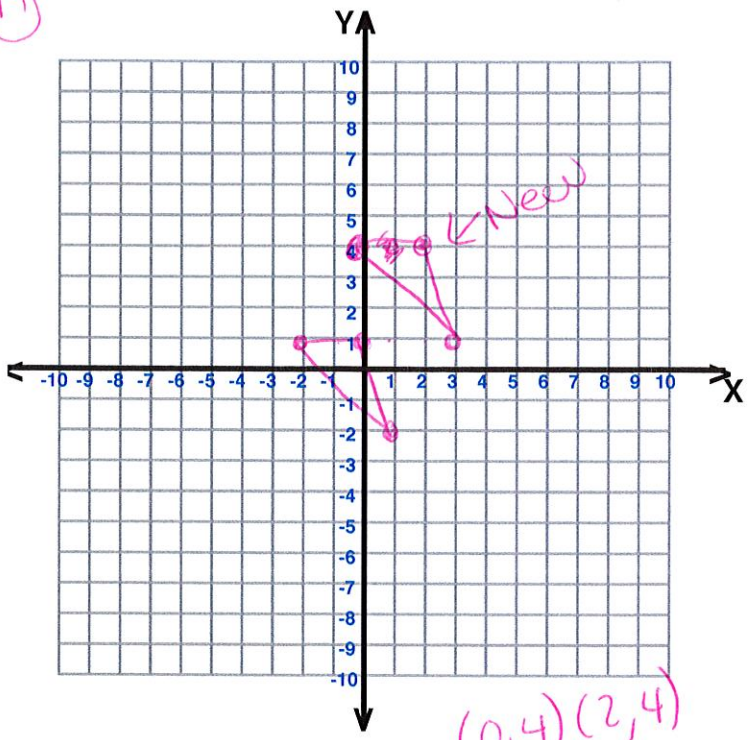
13



$(3, 1)$ $(5, 1)$
 $(6, -2)$

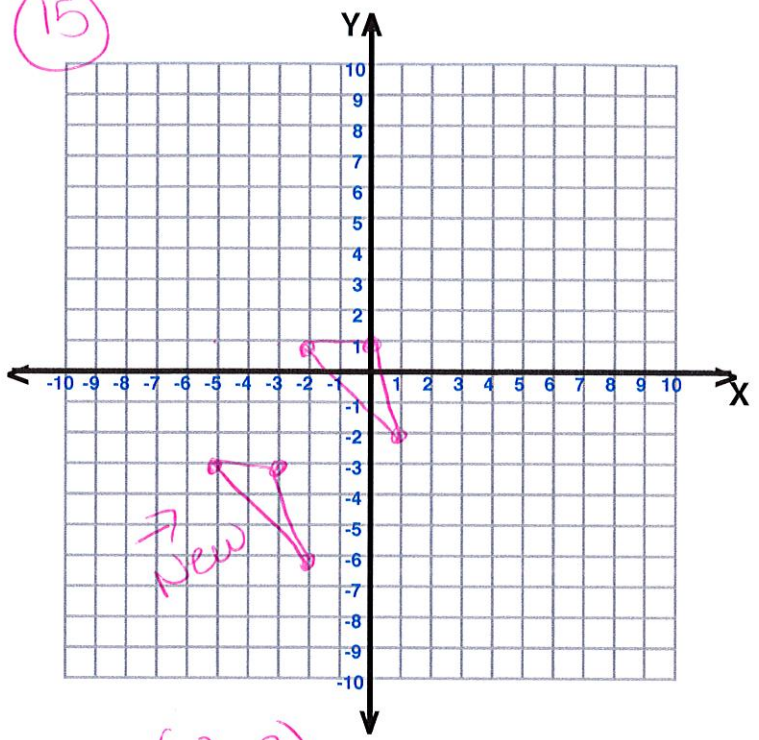


14



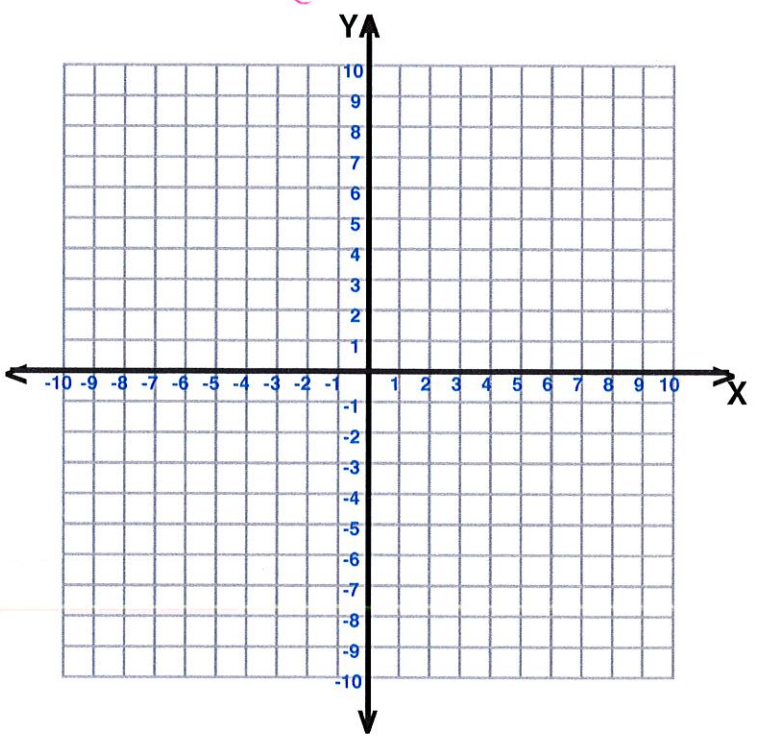
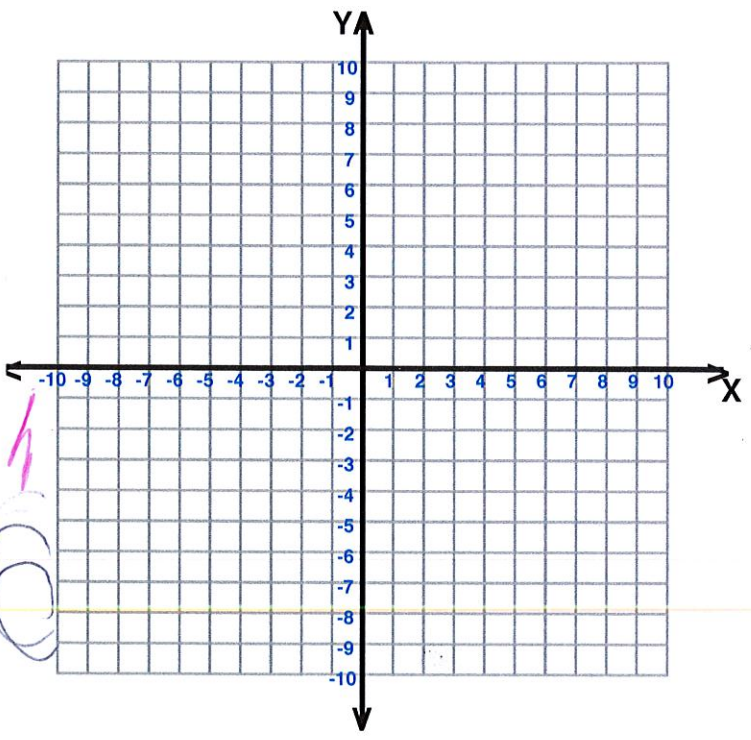
$(0, 4)$ $(2, 4)$
 $(3, 1)$

15



$(-3, -3)$
 $(-5, -3)$
 $(-2, -6)$

1



16) Yes, like an app on a smartphone you can move it up or down and to the side.

17) $(3, -2)$
↓

$(1, 0)$

From 3 to 1 on the x-axis, you are moving 2 to the left.

From -2 to 0 on the y-axis, you are moving 2 up.

(2 to the left, 2 up)

18) $(-8, -4)$
↓

$(-3, 5)$

From -8 to -3 on the x-axis, you are moving 5 to the right.

From -4 to 5 on the y-axis, you are moving 9 up.

(5 to the right, 9 up)

19) (6 to the right, 3 down) unit

20) (5 to the left, 2 down)

21) a) (up 1, 5 to the right)

b) No, it is 3 points below the fish and 1 point closer to the fish

c) (up 4, right 4)

22) Yes, you are only translating the image, moving all points an equal amount.

- congruent figures are the same shape + size

23) hrs of answers

Some examples:

2 horizontal, 1 vertical

2 vertical, 2 horizontal

1 horizontal, 1 vertical

2 horizontal, 1 vertical

24) Yes

25) No

26) No

27) Yes

28) $\frac{4.4\%}{2} = 2.2\%$
in 6 months

$550 \times .022 = 12.10$
(percent as decimal)