

Pg. 58(4-22, 26, 27,)

- ④ No, translation  
\*it is not flipped
- ⑤ Yes
- ⑥ Yes
- ⑦ NO
- ⑧ Yes
- ⑨ NO
- ⑩ - ⑪ see graph paper on next page
- ⑫ B, C, D, E, H, I, k, O, X
- ⑬ x-axis (you took the opp sign of y)
- ⑭ y-axis (you took opp sign of x)
- ⑮ y-axis (you took opp sign of x)
- ⑯ x-axis (you took opp sign of y)
- ⑰ (-x, -y)
- ⑱ <sup>a)</sup> Ambulance  
<sup>b)</sup> So you can see it  
in the rear view  
mirror behind you  
when driving.

$$A(3, 2) \rightarrow A'(3, -2)$$

$$B(4, 4) \rightarrow B'(4, -4)$$

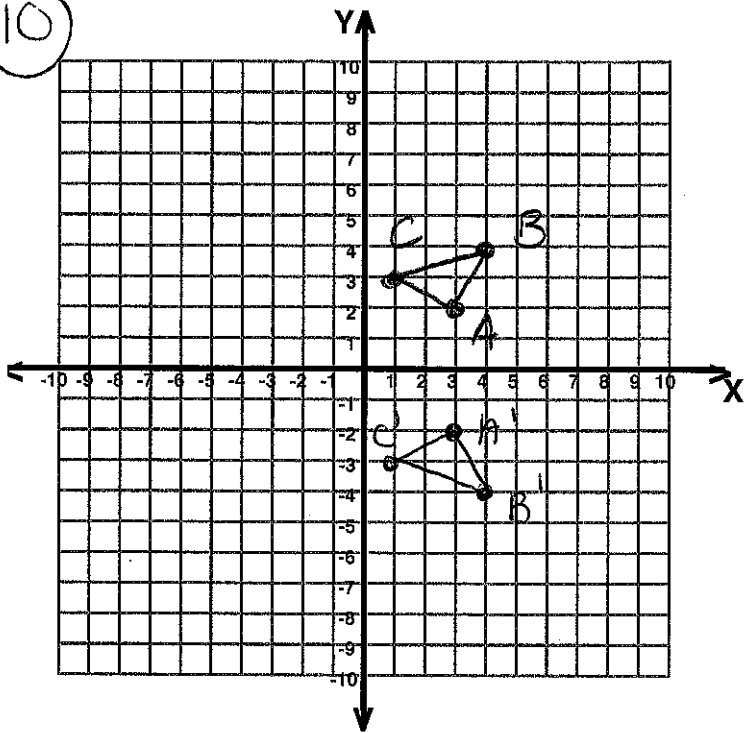
$$C(1, 3) \rightarrow C'(1, -3)$$

$$M(-2, 1) \rightarrow M'(-2, -1)$$

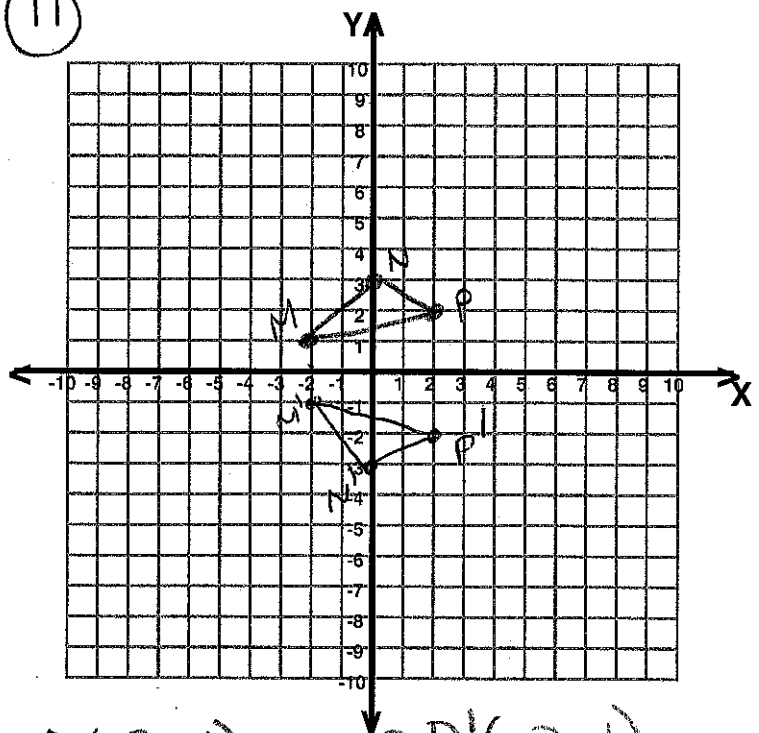
$$N(0, 3) \rightarrow N'(0, -3)$$

$$P(2, 2) \rightarrow P'(2, -2)$$

10



11



$$H(2, -2) \rightarrow H'(2, 2)$$

$$J(4, -1) \rightarrow J'(4, 1)$$

$$K(6, -3) \rightarrow K'(6, 3)$$

$$L(5, -4) \rightarrow L'(5, 4)$$

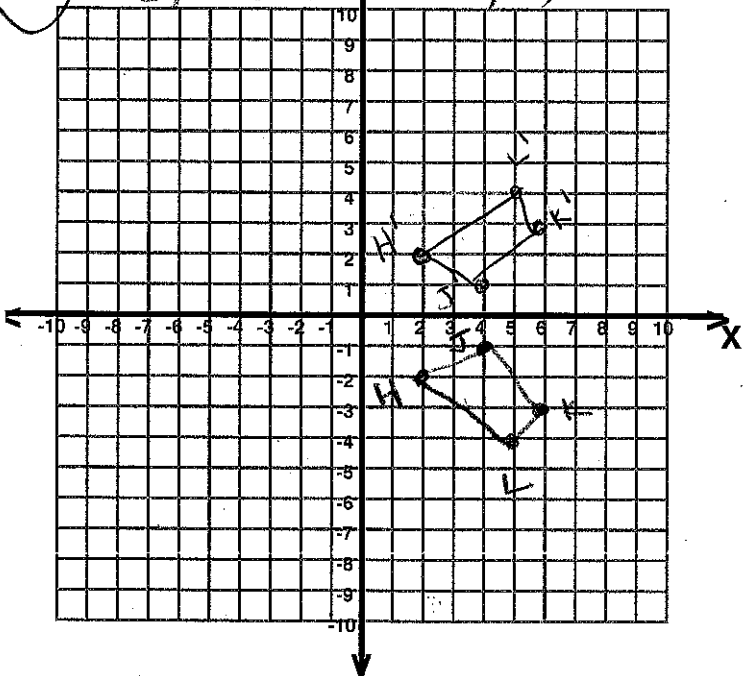
$$D(-2, -1) \rightarrow D'(-2, 1)$$

$$E(0, -1) \rightarrow E'(0, 1)$$

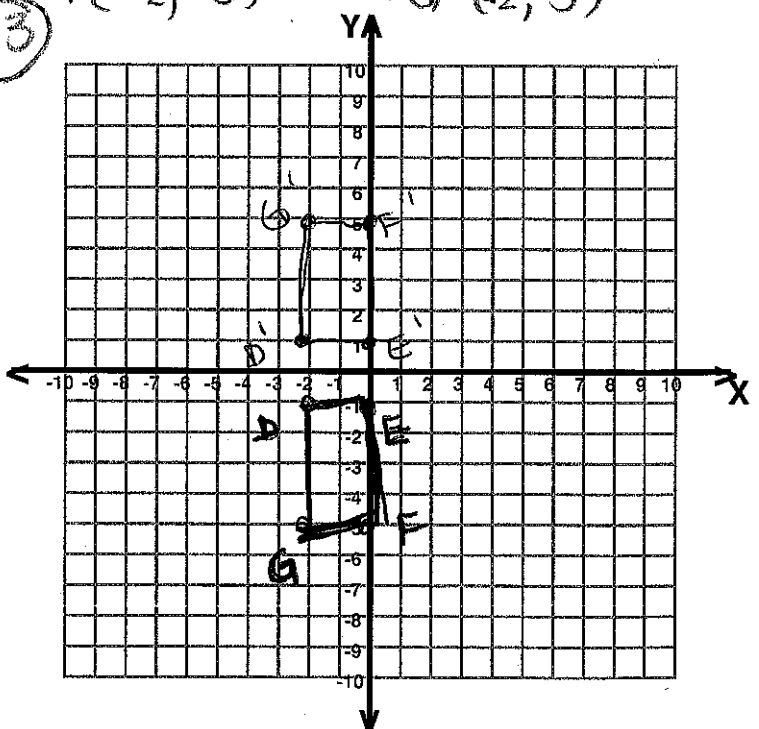
$$F(0, -5) \rightarrow F'(0, 5)$$

$$G(-2, -5) \rightarrow G'(-2, 5)$$

12



13



$$Q(-4, 2) \rightarrow Q'(4, 2)$$

$$R(-2, 4) \rightarrow R'(2, 4)$$

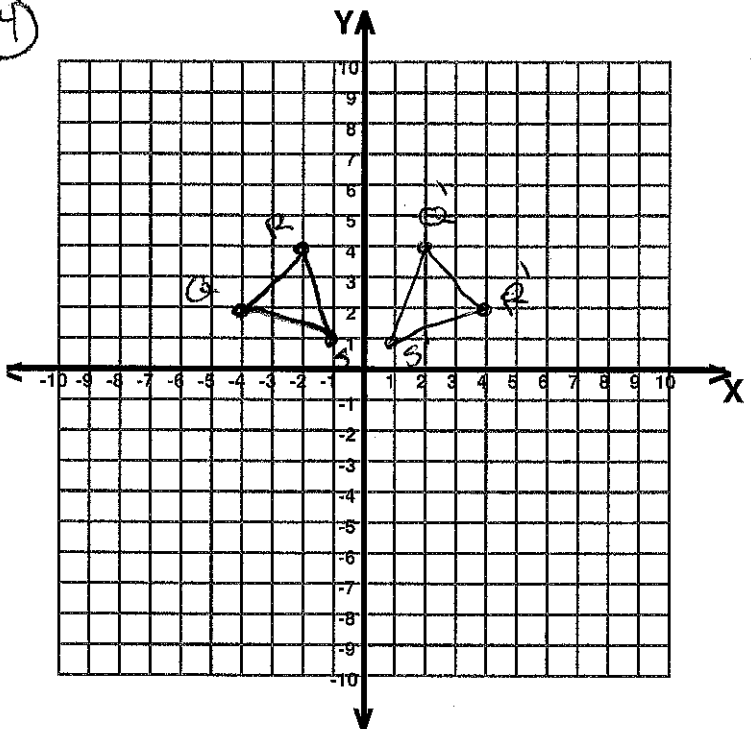
$$S(-1, 1) \rightarrow S'(1, 1)$$

$$T(4, -2) \rightarrow T'(-4, -2)$$

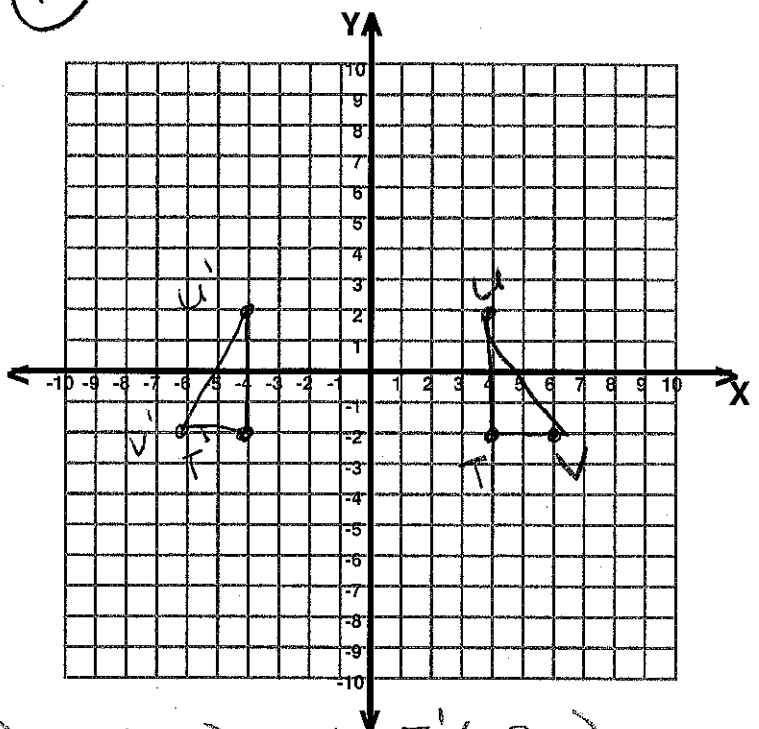
$$U(4, 2) \rightarrow U'(-4, 2)$$

$$V(6, -2) \rightarrow V'(-6, -2)$$

14



15



16

$$W(2, -1) \rightarrow W'(-2, -1)$$

$$X(5, -2) \rightarrow X'(-5, -2)$$

$$Y(5, -5) \rightarrow Y'(-5, -5)$$

$$Z(2, -4) \rightarrow Z'(-2, -4)$$

17

$$J(2, 2) \rightarrow J'(-2, 2)$$

$$K(7, 4) \rightarrow K'(-7, 4)$$

$$L(9, -2) \rightarrow L'(-9, -2)$$

$$M(3, -1) \rightarrow M'(-3, -1)$$

