

# The Parting Glass

For SATB\* and Melody Instrument with Optional Piano or Acoustic Guitar

Duration: ca. 2:30

Arranged by  
AUDREY SNYDER

Irish Folk Song

Performance options:

1. Voices and melody instrument\*\*
2. Voices, mel. inst. and acoustic guitar
3. Voices, mel. inst. and piano

Freely ( $\text{♩} = 92$ )

Melody Instrument *mp*

Solo

Freely ( $\text{♩} = 92$ )

Piano (opt.) *mp*

F B $\flat$ F F Dm B $\flat$  Of...



4

Solo

all the mon-ey that ere I had, I

Soprano *p*

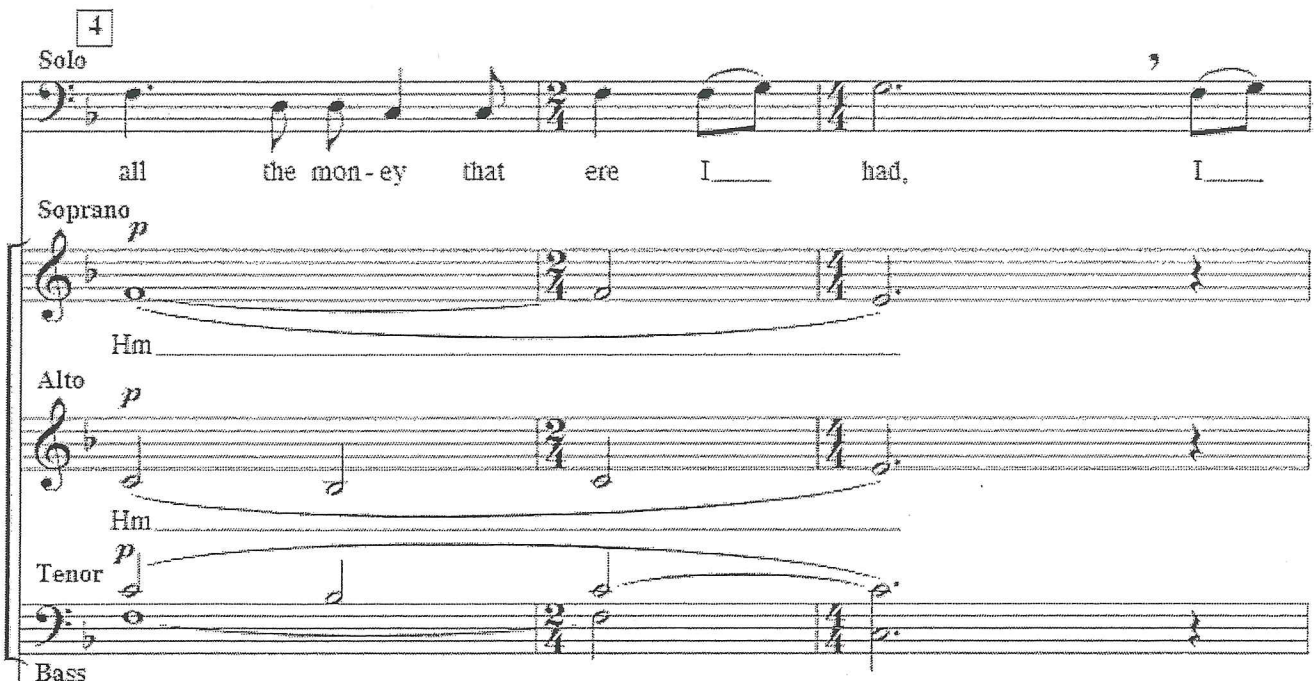
Hm

Alto *p*

Hm

Tenor *p*

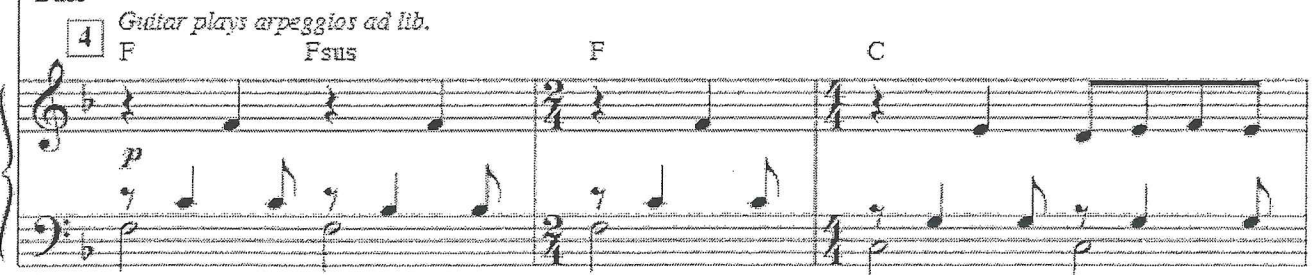
Bass



4

Guitar plays arpeggios ad lib.

F F $\text{sus}$  F C



\*\* Suggestions: Irish flute, flute, violin, or recorder. Melody Instrument part found on page 11.



ALL

spent it in good com - pa - ny. And of all the harm that

Dm F/C C Dm Bb

ere I've done, a - las was done to none but me. And

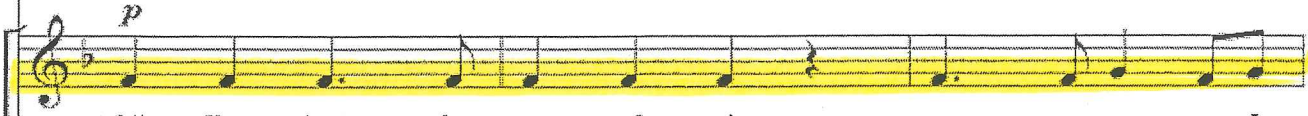
*mp*  
And

F/C C F Bb F/A F/C Dm Bb

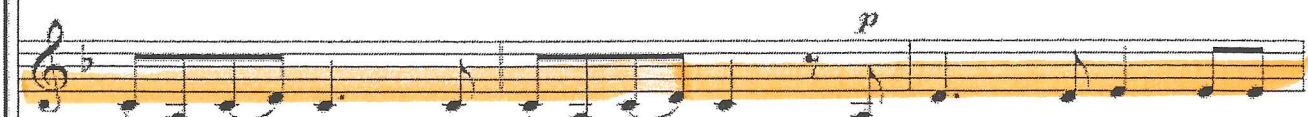
15



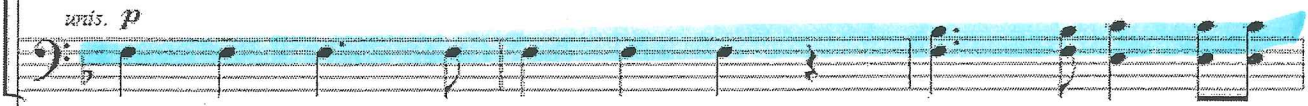
all I've done for want of wit, to mem - o - ry now I



All I've done for want of wit, mem - o - ry now I

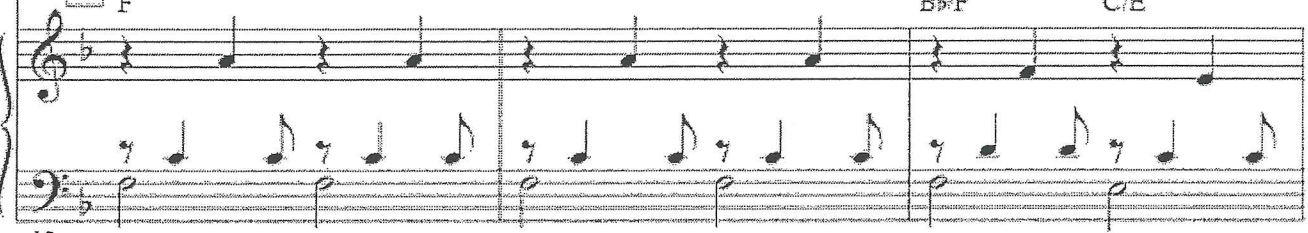


all I've done for want of wit, to mem - o - ry now I



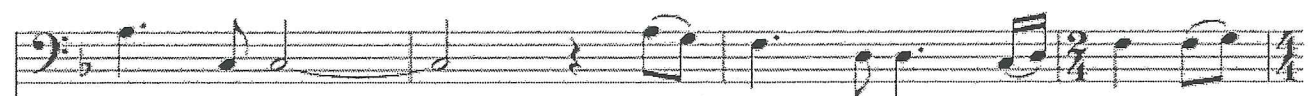
All I've done for want of wit, mem - o - ry now I

15



F BbF C/E

15



can't re-call. So fill to me the part - ing



can't re-call. Hm



can't re-call. Hm



can't re-call. Hm



Dm Csus C Dm Bb F/A

Melody Instrument

23

Musical staff for Melody Instrument, measures 22-23. The staff shows a melodic line starting with a whole rest in measure 22, followed by a half note G4 in measure 23. The dynamic marking *mp* is present at the end of the staff.

Solo

*p*

*end Solo*

Musical staff for Solo, measures 22-23. The staff shows a melodic line starting with a whole rest in measure 22, followed by a half note G4 in measure 23. The dynamic marking *p* is at the beginning and *end Solo* is at the end.

glass. Good - night and joy be with you all.

Soprano

Musical staff for Soprano, measures 22-23. The staff shows a melodic line starting with a whole rest in measure 22, followed by a half note G4 in measure 23.

Alto

Hm

Musical staff for Alto, measures 22-23. The staff shows a melodic line starting with a whole rest in measure 22, followed by a half note G4 in measure 23.

Tenor

Hm

Musical staff for Tenor, measures 22-23. The staff shows a melodic line starting with a whole rest in measure 22, followed by a half note G4 in measure 23.

Bass

Hm

Musical staff for Bass, measures 22-23. The staff shows a melodic line starting with a whole rest in measure 22, followed by a half note G4 in measure 23.

23

C Dm Bb F/A C F

Piano accompaniment for measures 22-23. The right hand plays a melodic line with chords C, Dm, Bb, F/A, C, F. The left hand plays a bass line with chords C, Dm, Bb, F/A, C, F.

22

Melody Instrument

Musical staff for Melody Instrument, measures 24-25. The staff shows a melodic line starting with a half note G4 in measure 24, followed by a half note A4 in measure 25.

Soprano

Musical staff for Soprano, measures 24-25. The staff shows a melodic line starting with a whole rest in measure 24, followed by a whole note G4 in measure 25.

Alto

Musical staff for Alto, measures 24-25. The staff shows a melodic line starting with a whole rest in measure 24, followed by a whole note G4 in measure 25.

Tenor

Musical staff for Tenor, measures 24-25. The staff shows a melodic line starting with a whole rest in measure 24, followed by a whole note G4 in measure 25.

Bass

Fsus F C F Bb F/A C

Piano accompaniment for measures 24-25. The right hand plays a melodic line with chords F<sup>sus</sup>, F, C, F, B<sup>b</sup>, F/A, C. The left hand plays a bass line with chords F, F, C, F, B<sup>b</sup>, F/A, C. The dynamic marking *mp* is present.

32

*mp*  
Of all the com - rades that

*mf melody*  
Of all the com - rades that

*mp*  
All the com - rades that

F F<sup>sus</sup> F F<sup>sus</sup> 32 F F<sup>sus</sup>

30

Soprano

ere I had, they're sor - ry for my go - ing a -

Alto  
ere I had, they're sor - ry for my going a -

Tenor  
ere I had, they're sor - ry for my going a -

Bass  
ere I had, they're sor - ry for my going a -

F C D<sup>sus</sup> D<sup>m</sup> F(add9) F

33

way. And all of the sweet-hearts that ere <sup>3</sup> I had, they

way. And all of the sweet-hearts that ere I had, they

way. And all of the sweet-hearts that ere I had, they

C/E C Dm Bb/F F C

36

wish me one more day to stay. But

wish me one more day to stay, day to

wish me one more day to stay, one more day to

F Bb F/C Dm(add9) Dm Bb(add9) Bb C

39

42

since it falls un - to my lot that I should rise while

*mf*

stay, un - to my lot that I should rise while

*mf*

stay, un - to my lot that I should rise while

42

F Dm C/E F B $\flat$ /F B $\flat$  C

*mf*

42

*mp*

you should not, I will gent - ly rise and I'll

*mp*

you should not, I will gent - ly rise and I'll

*mp*

you should not, I will gent - ly rise and I'll

Dm C/E Dm B $\flat$ (add9)

*mp*

45

*poco rit.* 50

soft - ly call, "Good - night and joy be with you

soft - ly call, "Good - night and joy be with you

soft - ly call, "Good - night and joy be with you

F/A C 50 Dm B $\flat$  F/A F/C Csus C

48

Melody Instrument

*a tempo* *mp* *poco rit.*

Soprano *a tempo* *poco rit.*

all."

Alto *a tempo* *poco rit.*

all."

Tenor *a tempo* *poco rit.*

Bass

all."

Dm Dm C/E F Csus

*a tempo* *poco rit.*

52

THE PARTING GLASS – SATB



A Little Slower

So fill to me the part - ing

So fill to me the part - ing

So fill to me the part - ing

A Little Slower

C C/E Dm Bb(add9) F/A

55

rit. rit. rit. rit.

glass. Good - night and joy be with you all.

glass. Good - night and joy be with you all.

glass. Good - night and joy be with you all.

C Dm Bb F/A F/C Csus C F

58

THE PARTING GLASS - SATB