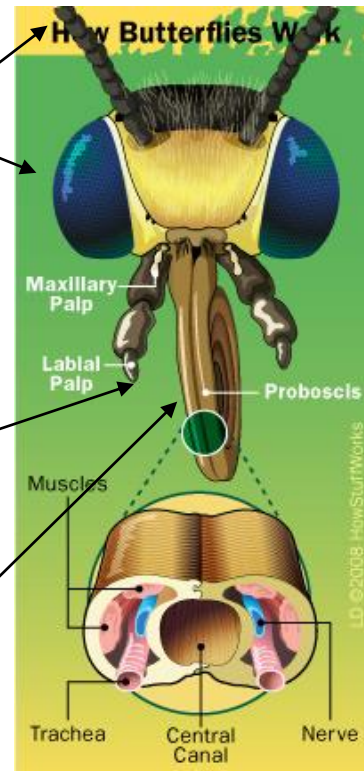


# How a Butterfly Eats

There are certain parts (organs) of the butterfly's head that help it find food:

- **Compound eyes**, which are good at detecting color and nearby movement
- **Antennae** with different parts that can move:
  - **tips** have organs for detecting smells
  - **base** has structures for sensing the butterfly's direction and position
- **Labial palps** at the base of the mouth parts, which help the butterfly decide what is and isn't food.

**Proboscis**, a long, straw-like tube used for drinking,



Butterfly proboscis anatomy  
Lee Dempsey, 2008  
HowStuffWorks

Other parts of a butterfly help it sense food too.

At the end of each of its **six legs** are **taste** organs that the butterfly uses to find food!

When a butterfly's **leg** touches a good food source, the **proboscis uncoils**. This lets the butterfly get and swallow the food.

The **food is digested** in organs in the butterfly's **abdomen**.

Adapted from:

<http://science.howstuffworks.com/environmental/life/zoology/insects-arachnids/butterfly1.htm>