

Learning Objective: Students will be able to use Euclid's Ladder to find the Least Common Multiple of two numbers.

Warm Up

Divisible by 9 and 3?

336	173	404	826	672	729	263	979
781	796	391	878	555	303	625	906
191	387	406	237	431	890	961	755

Divisible by 6?

796	661	452	147	573	994	525	621
821	376	540	203	459	475	768	923
737	879	464	819	437	615	220	978

Learning Objective: Students will be able to use Euclid's Ladder to find the Least Common Multiple of two numbers.

Warm Up Answers

Divisible by 9 and 3?

336	173	404	826	672	729	263	979
781	796	391	878	555	303	625	906
191	387	406	237	431	890	961	755

Divisible by 6?

796	661	452	147	573	994	525	621
821	376	540	203	459	475	768	923
737	879	464	819	437	615	220	978

Learning Objective: Students will be able to use Euclid's Ladder to find the Least Common Multiple of two numbers.

Homework Answers

1.5 Record and Practice Journal

Find the GCF of the numbers using lists of factors.

1. 9, 15

3

2. 11, 19

1

3. 8, 28

4

4. 60, 70

10

5. 40, 56

8

6. 35, 72

1

Find the GCF of the numbers using prime factorizations.

7. 4, 10

2

8. 5, 11

1

9. 6, 8

2

10. 14, 42

14

11. 45, 63

9

12. 60, 90

30

13. You are making identical gift bags using 24 candles and 36 bottles of lotion. What is the greatest number of gift bags you can make with no items left over?

12 gift bags

Learning Objective: Students will be able to use Euclid's Ladder to find the Least Common Multiple of two numbers.

Lesson 1.6

September 15, 2014

Essential Question:

How can you find the Least Common Multiple of two numbers?

Lesson 1.6

September 15, 2014

Lesson Objective:

Students will be able to:

use Euclid's Ladder to find the Least Common Multiple of two numbers.

Self-Evaluation Scale

Score	Description
4	I can teach other students how to use Euclid's Ladder to find the Least Common Multiple of two numbers.
3	I can use Euclid's Ladder to find the Least Common Multiple of two numbers.
2	I recognize, but still need help to use Euclid's Ladder to find the Least Common Multiple of two numbers.
1	I do not know how to use Euclid's Ladder to find the Least Common Multiple of two numbers.

Multiple

Count by a number

You're using that number's
multiples

5, 10, 15...

mult:pls

itself $\rightarrow \infty$

Factors

1 → itself

Learning Objective: Students will be able to use Euclid's Ladder to find the Least Common Multiple of two numbers.



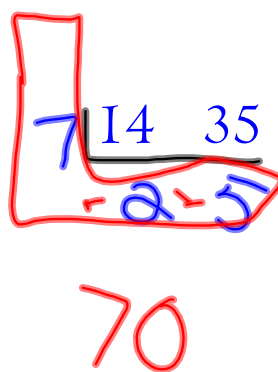
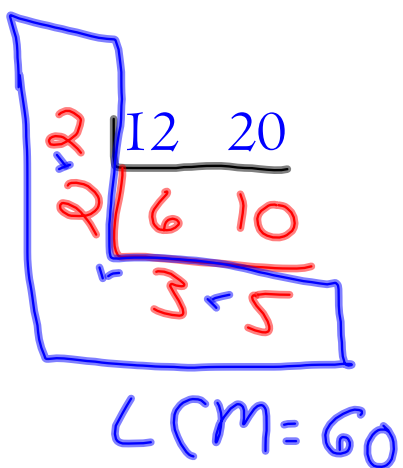
Euclid of Alexandria

lived from about 325 BC to about 265 BC

Euclid was a Greek mathematician best known for his treatise on geometry: *The Elements*. This influenced the development of Western mathematics for more than 2000 years.

Learning Objective: Students will be able to use Euclid's Ladder to find the Least Common Multiple of two numbers.

Euclid's Ladder



GCF Equal to or
Less than Smaller
#

LCM Equal to or
More than larger #

6, 12

$$\begin{aligned} \text{GCF} &= 6 \\ \text{LCM} &= 12 \end{aligned}$$

15, 30

$$\begin{aligned} \text{GCF} &= 15 \\ \text{LCM} &= 30 \end{aligned}$$

Learning Objective: Students will be able to use Euclid's Ladder to find the Least Common Multiple of two numbers.

On Your Own

$$\begin{array}{r} 6 \overline{) 12 \quad 30} \\ \underline{2 \quad 5} \\ 60 \end{array}$$

$$\begin{array}{r} 2 \overline{) 32 \quad 54} \\ \underline{16 \quad 27} \end{array}$$

$$\begin{array}{r} 216 \\ 2 \overline{) 24 \quad 108} \\ \underline{12 \quad 54} \\ 3 \overline{) 6 \quad 27} \\ \underline{2 \quad 9} \end{array}$$

$$\underline{51 \quad 85}$$

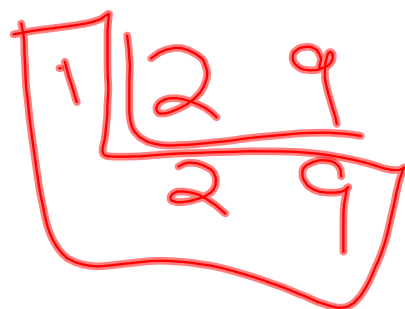
$$\underline{14 \quad 84}$$

$$\underline{39 \quad 66}$$

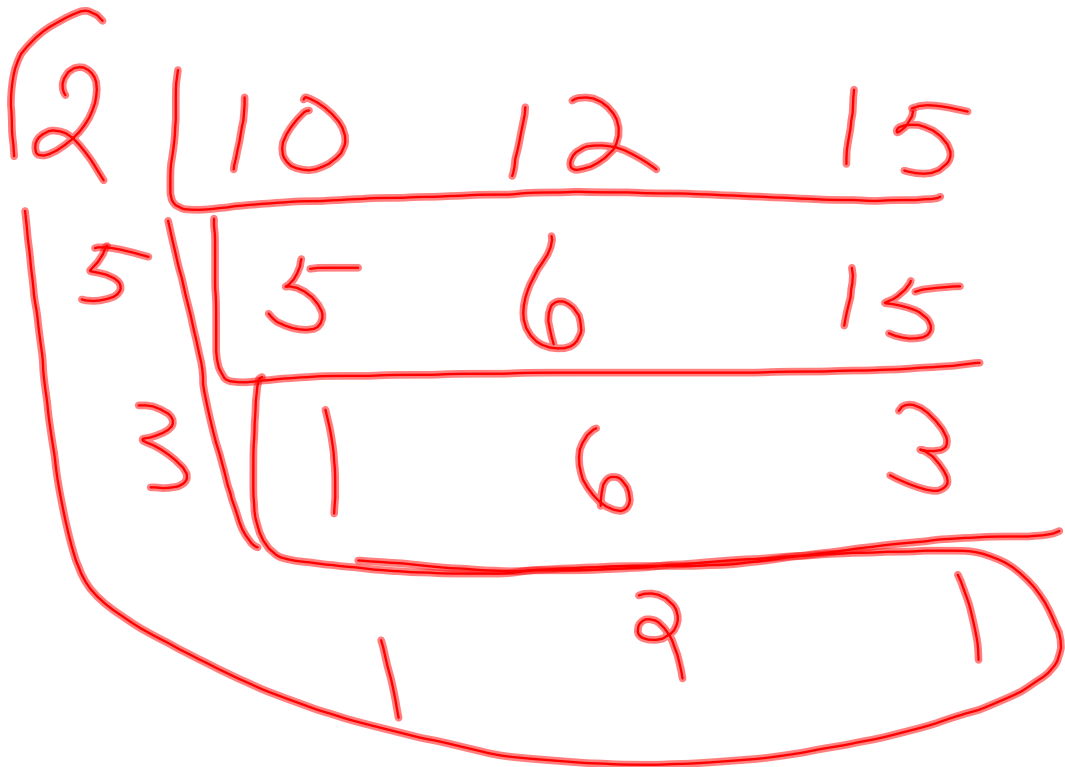
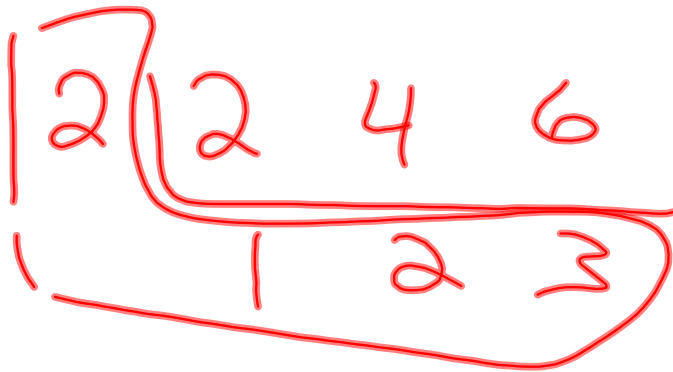
Assignment

Pg 40 + 41

6, 12, 20, 32



When $GCF = 1$
 $LCM = \text{Product}$



Learning Objective: Students will be able to use Euclid's Ladder to find the Least Common Multiple of two numbers.

Lesson 1.6

September 15, 2014

Essential Question:

How can you find the Least Common Multiple of two numbers?

Lesson 1.6

September 15, 2014

Lesson Objective:

Students will be able to:

use Euclid's Ladder to find the Least Common Multiple of two numbers.

Self-Evaluation Scale

Score	Description
4	I can teach other students how to use Euclid's Ladder to find the Least Common Multiple of two numbers.
3	I can use Euclid's Ladder to find the Least Common Multiple of two numbers.
2	I recognize, but still need help to use Euclid's Ladder to find the Least Common Multiple of two numbers.
1	I do not know how to use Euclid's Ladder to find the Least Common Multiple of two numbers.

Learning Objective: Students will be able to use Euclid's Ladder to find greatest common factors of two numbers.

Homework

In your Big Ideas Record and Practice Journal
page 26.

