

Chapter 14

Lareau Practice Test A (continued)

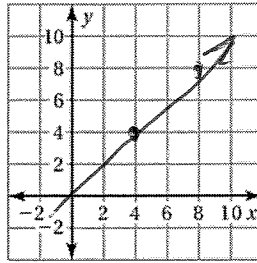
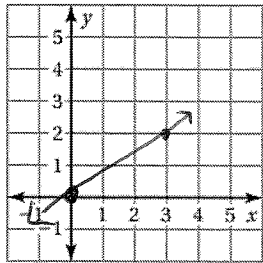
Solve the proportion.

13. $\frac{2}{3} = \frac{n}{12}$ 14. $\frac{33}{p} = \frac{3}{28}$ 15. $\frac{k}{6} = \frac{15}{18}$ 16. $\frac{2}{3} = \frac{3}{q}$

Graph the line that passes through the two points. Then find the slope of the line.

17. (0, 0), (3, 2)

18. (4, 4), (8, 8)



Tell whether x and y show direct variation. Explain your reasoning.

19.

x	1	2	3	4
y	4	8	12	16

20. $y + x = 1$

21. $\frac{y}{7} = \frac{2}{x}$

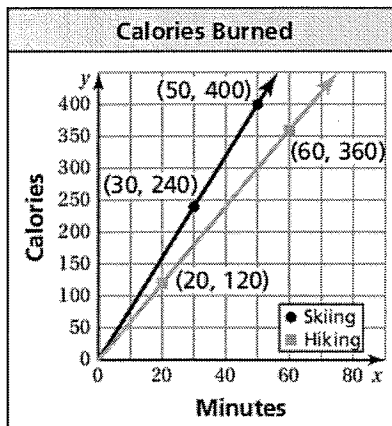
22. Your baseball team has won 6 games and lost 4 games. If the team does not lose any more games, how many games must the team win to have a win : loss ratio of 2 : 1? Explain your answer.

2 games.

23. It costs \$145 for 10 people to attend a concert. How much does it cost a group of 8 people? *\$116*

24. The graph shows the calories burned for hiking and downhill skiing.

- a. Find the slope of each line.
- b. How many more calories do you burn per minute downhill skiing than hiking?
- c. How many calories would you burn if you went downhill skiing for 80 minutes?



*Ski = slope 8
hike = slope 6
b) 2 calories
c) 640 calories.*

Answers

13. *$n = 8$*

14. *$p = 308$*

15. *$k = 5$*

16. *$q = 4.5$*

17. *See left.*

slope = $\frac{2}{3}$

18. *See left.*

slope = 1

19. *yes*

20. *no*

21. *no*

22. *See left.*

23. _____

24. a. _____

b. _____

c. _____