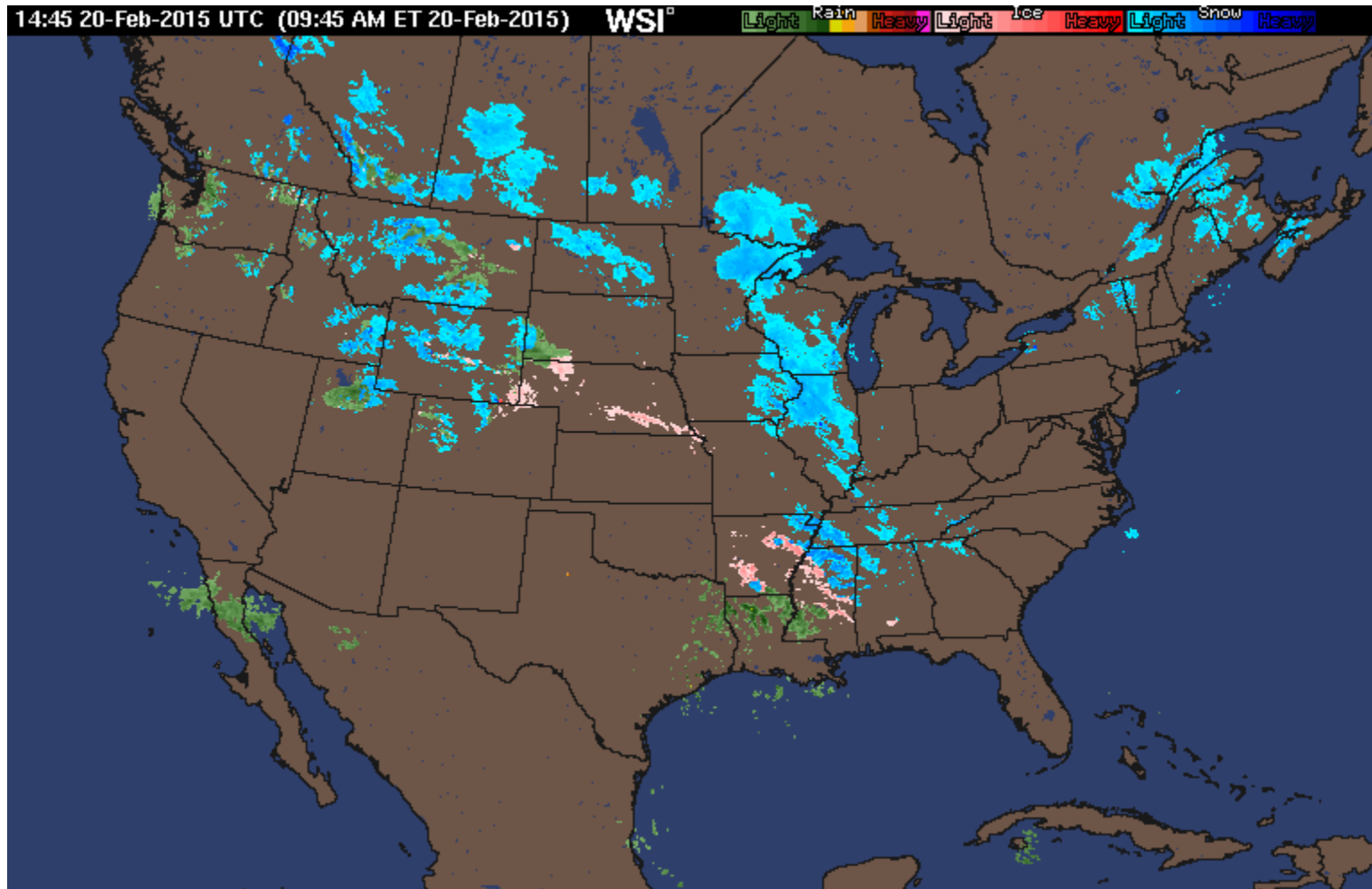
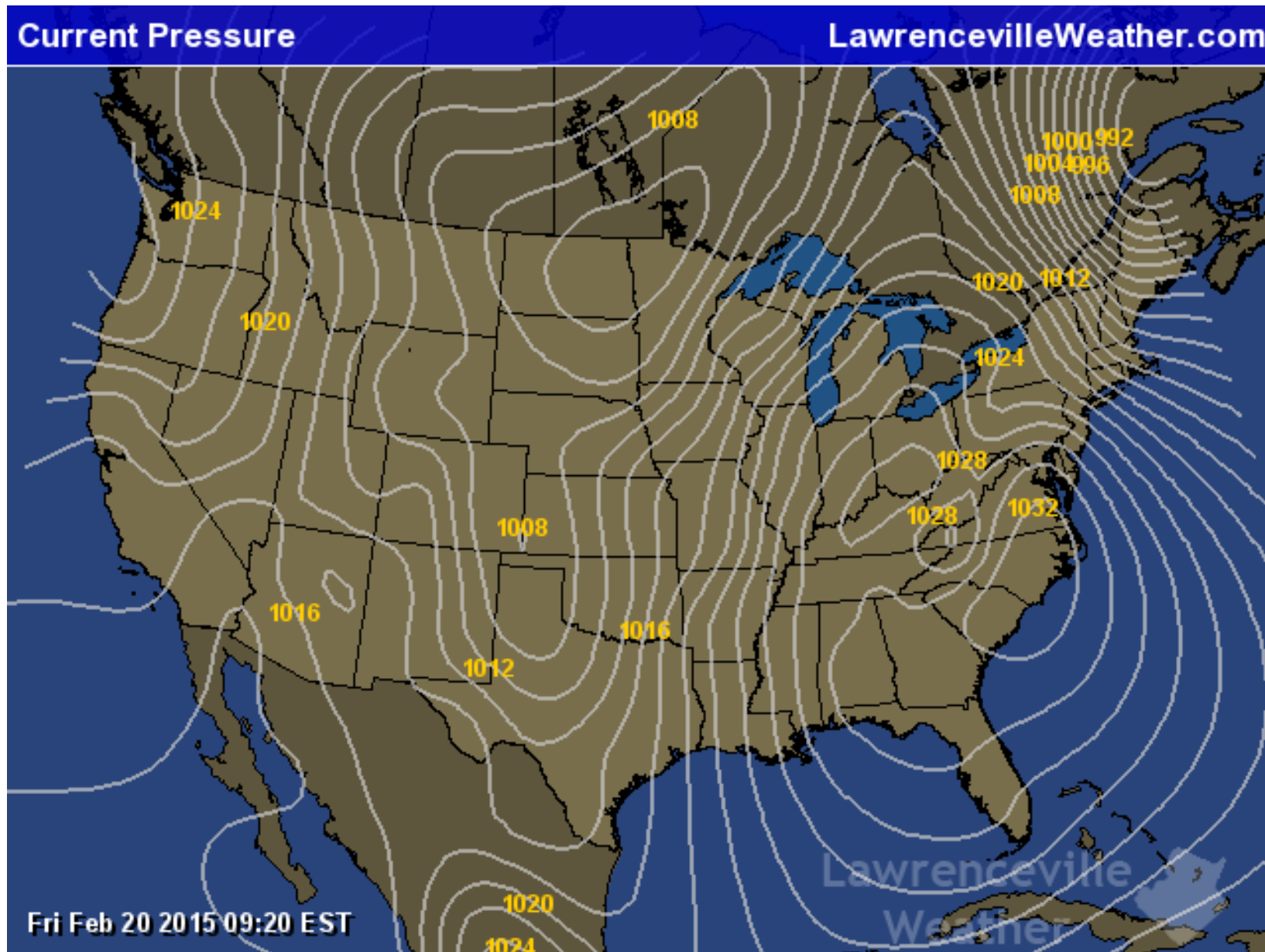


- Use the Doppler Radar to predict which areas of the country will receive precipitation in the next 24 hours.
- Tell what type of precipitation and how heavy it will be.



- Use the barometric pressure map to determine areas of high and low pressure around the country.
- Tell what kind of weather the high and low pressure systems will bring to those areas.



- Name the fronts and the parts of the country that will be affected in the next 24 hours.
- Tell the weather along the front and following it.

